



**МИНИСТЕРСТВО ПРИРОДНЫХ РЕСУРСОВ,
ЛЕСНОГО ХОЗЯЙСТВА И ЭКОЛОГИИ
ПЕРМСКОГО КРАЯ**

П Р И К А З

30.05.2024

№ 30-01-02-586

**Об уточнении границы
береговой линии, водоохранной
зоны, прибрежной защитной
полосы участка реки Тулвы
вблизи деревни Ишимово
Бардымского муниципального
округа Пермского края**

В соответствии со ст. 26, 65 Водного кодекса Российской Федерации, Правилами установления на местности границ водоохранных зон и границ прибрежных защитных полос водных объектов, утвержденными постановлением Правительства Российской Федерации от 10 января 2009 г. № 17, п. 6 Правил определения местоположения береговой линии (границы водного объекта), случаев и периодичности ее определения и о внесении изменений в Правила установления на местности границ водоохранных зон и границ прибрежных защитных полос водных объектов, утвержденными Постановлением Правительства Российской Федерации от 29 апреля 2016 г. № 377, пунктом 3.3.7 Положения о Министерстве природных ресурсов, лесного хозяйства и экологии Пермского края, утвержденного постановлением Правительства Пермского края от 3 сентября 2012 г. № 756-п,

ПРИКАЗЫВАЮ:

1. Уточнить границы береговой линии, водоохранной зоны, прибрежной защитной полосы части водного объекта – р. Тулва, протяженностью по левому берегу 4 570 метров и 6 229 метров по правому берегу в границах земельных участков с кадастровыми номерами: 59:13:1340105, 59:13:1470102, 59:13:2570000, вблизи деревни Ишимово Бардымского муниципального округа Пермского края, согласно приложению к настоящему приказу.

2. Организационно-аналитическому отделу управления правового и организационно-аналитического обеспечения Министерства природных ресурсов, лесного хозяйства и экологии Пермского края организовать опубликование настоящего приказа на официальном сайте губернатора и Правительства Пермского края (www.permkrai.ru), «Официальном интернет-

портале правовой информации» (www.pravo.gov.ru). размещение на официальном сайте Минприроды Пермского края (www.priroda.permkrai.ru).

3. Настоящий Приказ вступает в силу через 10 дней после дня его официального опубликования.

И.о. министра природных ресурсов,
лесного хозяйства и экологии
Пермского края



О.Н. Солонцов

Приложение
к приказу
Министерства природных
ресурсов, лесного хозяйства
и экологии Пермского края
от 30.05.2024 № 30-01-02-586

**Изменения границ береговой линии, водоохранной зоны, прибрежной
защитной полосы части водного объекта – р. Тулва**

1. Уточняемая граница береговой линии водного объекта – части
р. Тулва

	по данным ЕГРН		уточняемые границы	
	X	Y	X	Y
1	409031.80	2191940.76	409031.80	2191940.76
2	409007.69	2191944.97	409015.26	2191952.29
3	408981.62	2191948.86	409006.29	2191954.83
4	408955.91	2191950.79	408987.55	2191960.78
5	408928.61	2191949.43	408968.11	2191965.37
6	408903.98	2191943.85	408953.08	2191968.23
7	408885.57	2191934.80	408938.10	2191968.65
8	408862.10	2191916.24	408925.14	2191967.91
9	408843.86	2191894.14	408912.81	2191966.33
10	408831.57	2191866.93	408901.38	2191963.57
11	408824.36	2191825.13	408891.33	2191958.97
12	408827.09	2191793.57	408883.49	2191955.16
13	408833.66	2191764.98	408872.86	2191946.75
14	408839.58	2191737.39	408863.12	2191938.44
15	408846.56	2191726.72	408853.70	2191929.02
16	408856.18	2191713.83	408843.97	2191917.91
17	408874.43	2191687.69	408836.84	2191906.57
18	408883.26	2191660.45	408829.86	2191893.98
19	408883.10	2191625.91	408824.25	2191879.58
20	408879.21	2191578.94	408820.33	2191863.82
21	408868.58	2191549.15	408819.17	2191851.22
22	408859.55	2191521.32	408818.85	2191832.70
23	408851.48	2191492.87	408819.17	2191817.57
24	408835.29	2191466.25	408820.44	2191804.97
25	408821.14	2191454.96	408823.61	2191792.27
26	408799.77	2191448.14	408827.11	2191775.44
27	408771.79	2191444.50	408828.80	2191756.39
28	408749.86	2191443.55	408829.65	2191736.92
29	408733.66	2191442.66	408827.74	2191716.07
30	408707.68	2191439.67	408825.94	2191701.36
31	408680.71	2191439.29	408829.83	2191677.33
32	408656.92	2191442.24	408845.70	2191642.93

33	408638.64	2191447.51	408856.60	2191628.11
34	408624.89	2191453.83	408860.94	2191625.47
35	408608.09	2191468.90	408862.43	2191629.70
36	408592.91	2191476.84	408852.79	2191653.09
37	408575.19	2191486.36	408838.72	2191681.45
38	408559.64	2191502.43	408835.01	2191698.07
39	408544.59	2191522.34	408837.98	2191707.70
40	408527.00	2191546.84	408842.85	2191701.77
41	408513.56	2191567.84	408850.04	2191678.91
42	408494.92	2191586.89	408854.28	2191669.71
43	408482.39	2191598.77	408855.65	2191675.21
44	408472.14	2191610.35	408849.20	2191701.14
45	408463.42	2191629.44	408850.57	2191709.29
46	408455.12	2191643.67	408856.71	2191697.44
47	408447.45	2191654.96	408865.47	2191673.12
48	408441.41	2191668.23	408872.90	2191657.75
49	408442.47	2191686.18	408876.82	2191644.41
50	408448.72	2191703.54	408874.49	2191628.01
51	408455.72	2191714.38	408878.72	2191611.82
52	408464.02	2191725.58	408873.14	2191591.51
53	408467.07	2191739.64	408867.18	2191569.28
54	408473.80	2191746.91	408856.73	2191551.16
55	408485.77	2191751.30	408845.75	2191529.46
56	408495.03	2191762.84	408828.95	2191510.28
57	408512.48	2191770.91	408821.54	2191501.81
58	408545.01	2191793.52	408824.58	2191501.15
59	408559.19	2191801.85	408843.24	2191520.60
60	408564.32	2191807.80	408846.81	2191523.11
61	408576.37	2191829.47	408847.47	2191520.33
62	408594.03	2191845.68	408836.36	2191502.87
63	408611.81	2191875.91	408819.69	2191488.72
64	408621.85	2191902.12	408793.10	2191475.75
65	408624.36	2191932.45	408765.19	2191469.40
66	408620.32	2191964.32	408736.35	2191461.46
67	408610.84	2191992.22	408706.71	2191456.70
68	408596.21	2192014.16	408681.31	2191457.49
69	408585.70	2192022.50	408647.97	2191466.36
70	408577.79	2192030.20	408613.31	2191479.06
71	408573.09	2192039.57	408580.24	2191503.80
72	408567.35	2192044.07	408555.24	2191531.18
73	408558.39	2192044.92	408522.69	2191586.21
74	408548.48	2192043.15	408503.38	2191619.68
75	408539.56	2192042.69	408488.03	2191658.71

76	408523.62	2192053.05	408484.99	2191689.00
77	408507.23	2192062.92	408482.35	2191690.46
78	408493.15	2192069.90	408477.93	2191685.27
79	408477.35	2192084.02	408473.16	2191665.27
80	408463.47	2192100.12	408474.38	2191640.51
81	408445.04	2192115.17	408484.44	2191618.76
82	408426.37	2192124.35	408497.45	2191589.81
83	408404.41	2192137.40	408496.29	2191587.56
84	408376.64	2192146.79	408482.93	2191600.53
85	408352.49	2192152.31	408467.65	2191622.69
86	408335.58	2192152.07	408456.87	2191642.80
87	408322.62	2192148.64	408454.95	2191643.99
88	408303.56	2192140.89	408452.50	2191634.79
89	408279.20	2192137.30	408448.60	2191636.18
90	408258.39	2192138.29	408442.78	2191650.67
91	408249.15	2192139.29	408442.65	2191674.15
92	408247.93	2192139.42	408451.18	2191699.42
93	408231.68	2192141.18	408461.70	2191712.98
94	408208.22	2192144.77	408487.27	2191741.99
95	408192.14	2192154.97	408516.40	2191761.67
96	408178.65	2192166.18	408529.26	2191772.86
97	408159.94	2192178.95	408551.72	2191787.39
98	408145.11	2192193.09	408562.44	2191797.95
99	408131.52	2192210.18	408582.84	2191819.85
100	408118.39	2192220.09	408601.41	2191839.06
101	408099.73	2192227.96	408616.81	2191864.31
102	408083.34	2192238.17	408624.83	2191884.15
103	408067.34	2192242.19	408631.02	2191913.36
104	408051.83	2192247.83	408629.27	2191939.39
105	408040.04	2192253.86	408621.33	2191973.53
106	408029.96	2192253.71	408609.51	2191996.46
107	408018.59	2192252.90	408597.84	2192018.29
108	408011.24	2192242.38	408595.36	2192047.84
109	408006.73	2192239.70	408589.07	2192078.73
110	407997.30	2192239.24	408570.06	2192136.32
111	407987.83	2192241.74	408551.94	2192164.08
112	407977.99	2192248.44	408483.15	2192206.20
113	407962.94	2192254.42	408444.20	2192228.42
114	407944.86	2192268.49	408403.77	2192244.72
115	407929.57	2192285.23	408369.69	2192251.50
116	407915.00	2192303.29	408360.50	2192253.03
117	407909.85	2192323.42	408328.61	2192252.42
118	407904.06	2192341.91	408309.55	2192252.12

119	407897.48	2192347.02	408274.94	2192253.71
120	407880.96	2192366.34	408218.11	2192259.58
121	407861.44	2192390.19	408185.72	2192265.14
122	407839.71	2192408.79	408186.52	2192260.06
123	407808.11	2192432.29	408203.82	2192253.55
124	407790.07	2192443.46	408225.57	2192249.26
125	407763.22	2192456.44	408256.84	2192232.60
126	407734.06	2192472.00	408274.31	2192229.74
127	407707.92	2192480.43	408306.37	2192234.98
128	407683.76	2192487.27	408333.63	2192238.52
129	407661.30	2192488.93	408337.65	2192226.14
130	407639.80	2192491.23	408328.02	2192208.89
131	407614.03	2192496.41	408334.37	2192209.95
132	407595.75	2192501.68	408347.50	2192227.73
133	407580.37	2192507.99	408362.51	2192237.05
134	407569.91	2192511.10	408400.31	2192226.77
135	407563.50	2192504.17	408446.46	2192207.09
136	407566.82	2192499.67	408486.46	2192187.19
137	407569.52	2192492.86	408526.04	2192161.16
138	407556.93	2192486.17	408554.41	2192132.37
139	407533.05	2192475.93	408564.57	2192104.85
140	407513.29	2192470.43	408565.25	2192100.42
141	407498.01	2192470.22	408561.71	2192099.89
142	407463.91	2192466.48	408555.09	2192106.29
143	407433.78	2192457.27	408533.68	2192135.05
144	407414.71	2192448.87	408513.27	2192145.99
145	407393.34	2192441.40	408494.85	2192151.37
146	407366.51	2192430.26	408487.62	2192141.37
147	407332.76	2192423.60	408497.95	2192113.30
148	407304.78	2192423.87	408519.53	2192091.68
149	407286.82	2192429.49	408530.00	2192067.08
150	407263.89	2192440.56	408550.16	2192052.63
151	407251.03	2192453.42	408553.18	2192046.92
152	407239.27	2192457.50	408549.69	2192045.96
153	407221.57	2192467.04	408533.34	2192051.84
154	407200.52	2192483.36	408514.29	2192060.73
155	407181.01	2192506.23	408491.74	2192073.59
156	407172.66	2192522.74	408470.63	2192098.51
157	407161.72	2192536.28	408455.23	2192112.00
158	407155.91	2192550.21	408426.34	2192131.05
159	407147.03	2192563.78	408401.62	2192143.23
160	407142.95	2192577.07	408389.00	2192144.42
161	407141.72	2192595.65	408375.66	2192148.07

162	407148.03	2192609.43	408344.47	2192154.66
163	407149.14	2192623.13	408326.85	2192155.06
164	407148.67	2192633.87	408302.16	2192153.15
165	407144.65	2192643.26	408301.13	2192149.58
166	407142.72	2192666.37	408306.77	2192145.93
167	407140.72	2192682.97	408295.18	2192142.67
168	407130.41	2192709.56	408272.48	2192139.82
169	407122.57	2192735.20	408246.60	2192139.97
170	407115.39	2192760.86	408228.98	2192142.28
171	407099.60	2192797.16	408216.64	2192147.95
172	407087.54	2192822.73	408192.74	2192160.10
173	407072.56	2192846.32	408178.30	2192168.51
174	407050.81	2192867.85	408164.49	2192178.43
175	407031.05	2192885.49	408156.79	2192187.40
176	407002.38	2192911.50	408148.13	2192199.86
177	406974.34	2192934.93	408141.55	2192208.04
178	406948.08	2192952.81	408134.32	2192213.44
179	406930.33	2192965.61	408124.16	2192218.28
180	406917.70	2192973.59	408116.78	2192223.68
181	406907.94	2192973.76	408106.07	2192233.12
182	406899.23	2192968.77	408098.92	2192236.40
183	406888.92	2192960.79	408075.77	2192245.79
184	406884.50	2192956.39	408051.83	2192255.58
185	406879.62	2192951.54	408029.47	2192259.69
186	406867.08	2192940.93	408003.01	2192261.14
187	406861.74	2192929.80	407980.65	2192262.60
188	406852.07	2192916.30	407962.79	2192262.73
189	406837.25	2192905.00	407949.83	2192271.46
190	406816.97	2192890.04	407933.16	2192286.41
191	406791.39	2192881.22	407919.93	2192307.44
192	406774.16	2192877.40	407914.90	2192327.42
193	406767.75	2192873.73	407906.17	2192341.57
194	406752.51	2192869.59	407884.37	2192362.69
195	406729.22	2192860.48	407869.13	2192382.06
196	406709.24	2192852.90	407857.70	2192393.70
197	-	-	407832.20	2192414.02
198	-	-	407811.35	2192429.89
199	-	-	407796.11	2192440.69
200	-	-	407773.56	2192453.92
201	-	-	407762.03	2192459.42
202	-	-	407730.28	2192474.02
203	-	-	407699.48	2192483.13
204	-	-	407672.28	2192488.42

205	-	-	407641.38	2192493.07
206	-	-	407602.22	2192501.33
207	-	-	407577.35	2192510.33
208	-	-	407560.00	2192517.92
209	-	-	407538.16	2192527.64
210	-	-	407504.82	2192546.69
211	-	-	407488.59	2192555.17
212	-	-	407471.61	2192559.80
213	-	-	407476.57	2192550.66
214	-	-	407508.95	2192533.99
215	-	-	407529.23	2192523.43
216	-	-	407527.49	2192521.09
217	-	-	407523.57	2192518.52
218	-	-	407515.62	2192518.12
219	-	-	407495.72	2192527.68
220	-	-	407480.22	2192529.70
221	-	-	407466.72	2192531.61
222	-	-	407460.53	2192528.91
223	-	-	407464.18	2192523.99
224	-	-	407489.43	2192517.16
225	-	-	407516.26	2192509.54
226	-	-	407520.54	2192499.07
227	-	-	407515.74	2192488.16
228	-	-	407513.89	2192485.48
229	-	-	407495.41	2192479.94
230	-	-	407461.56	2192472.65
231	-	-	407436.37	2192462.17
232	-	-	407408.54	2192454.24
233	-	-	407375.83	2192446.30
234	-	-	407346.41	2192438.47
235	-	-	407326.44	2192432.75
236	-	-	407300.93	2192432.86
237	-	-	407274.90	2192437.52
238	-	-	407266.64	2192445.88
239	-	-	407255.74	2192453.81
240	-	-	407234.10	2192464.42
241	-	-	407203.62	2192492.05
242	-	-	407179.80	2192528.32
243	-	-	407163.06	2192554.67
244	-	-	407150.91	2192587.61
245	-	-	407155.91	2192600.39
246	-	-	407159.01	2192624.60
247	-	-	407153.93	2192650.56

248	-	-	407140.51	2192689.53
249	-	-	407124.88	2192737.47
250	-	-	407114.32	2192769.70
251	-	-	407102.89	2192796.53
252	-	-	407091.14	2192818.04
253	-	-	407077.57	2192839.31
254	-	-	407068.76	2192851.30
255	-	-	407051.93	2192869.63
256	-	-	407041.14	2192879.64
257	-	-	407019.94	2192900.35
258	-	-	407007.16	2192911.62
259	-	-	406992.16	2192924.88
260	-	-	406982.87	2192931.31
261	-	-	406964.22	2192944.09
262	-	-	406944.54	2192960.36
263	-	-	406923.26	2192974.01
264	-	-	406900.56	2192983.93
265	-	-	406879.37	2192988.14
266	-	-	406869.96	2192990.16
267	-	-	406852.73	2192969.11
268	-	-	406840.24	2192971.94
269	-	-	406831.64	2192970.55
270	-	-	406820.99	2192969.36
271	-	-	406816.56	2192967.05
272	-	-	406812.32	2192962.48
273	-	-	406805.51	2192951.50
274	-	-	406800.55	2192942.70
275	-	-	406800.62	2192939.33
276	-	-	406812.52	2192937.01
277	-	-	406826.54	2192941.12
278	-	-	406842.41	2192948.55
279	-	-	406864.47	2192956.41
280	-	-	406874.87	2192954.50
281	-	-	406875.82	2192952.60
282	-	-	406869.63	2192949.50
283	-	-	406856.69	2192946.57
284	-	-	406853.84	2192941.17
285	-	-	406850.50	2192933.14
286	-	-	406831.45	2192923.61
287	-	-	406807.64	2192910.59
288	-	-	406786.84	2192893.61
289	-	-	406758.11	2192872.81
290	-	-	406730.01	2192860.11

291	-	-	406708.32	2192851.34
292	406688.20	2192844.78	406688.20	2192844.78
293	406579.80	2192788.66	406579.80	2192788.66
294	406590.47	2192793.71	406680.93	2192789.92
295	406603.77	2192805.33	406720.11	2192796.17
296	406622.85	2192813.73	406738.76	2192801.15
297	406642.00	2192817.26	406754.40	2192807.71
298	406664.41	2192820.49	406763.76	2192814.06
299	406684.20	2192824.35	406781.22	2192834.24
300	406692.27	2192828.05	406794.19	2192845.35
301	406706.63	2192833.20	406813.50	2192858.31
302	406729.21	2192839.00	406839.89	2192871.83
303	406749.93	2192846.79	406850.34	2192877.36
304	406766.12	2192851.24	406874.68	2192884.04
305	406774.64	2192847.13	406888.44	2192889.80
306	406773.10	2192840.92	406896.71	2192890.59
307	406761.53	2192830.65	406910.14	2192887.35
308	406754.48	2192823.38	406926.01	2192882.85
309	406759.06	2192821.17	406932.23	2192877.56
310	406762.58	2192826.09	406943.08	2192872.80
311	406776.72	2192838.34	406951.88	2192871.87
312	406794.71	2192854.58	406962.46	2192868.50
313	406817.62	2192867.94	406970.27	2192861.75
314	406854.87	2192885.95	406982.24	2192855.07
315	406874.19	2192891.11	406987.79	2192846.21
316	406887.39	2192896.18	406999.63	2192840.59
317	406899.09	2192897.32	407007.77	2192833.51
318	406922.63	2192896.34	407018.75	2192829.08
319	406951.22	2192898.70	407021.79	2192822.79
320	406964.20	2192901.15	407027.88	2192818.96
321	406967.69	2192906.73	407034.10	2192816.91
322	406972.54	2192909.42	407049.77	2192812.54
323	406980.40	2192904.97	407056.72	2192800.83
324	406995.96	2192885.95	407068.16	2192785.75
325	407014.78	2192865.67	407074.64	2192769.54
326	407026.56	2192860.30	407078.08	2192747.78
327	407038.17	2192844.49	407081.32	2192747.98
328	407045.82	2192831.87	407086.75	2192751.22
329	407052.03	2192830.00	407088.60	2192748.97
330	407067.75	2192798.94	407084.63	2192734.62
331	407080.04	2192781.18	407088.07	2192727.34
332	407097.99	2192752.42	407092.11	2192718.41
333	407110.24	2192715.75	407094.29	2192709.88

334	407116.15	2192688.45	407095.48	2192696.45
335	407113.16	2192669.18	407094.09	2192695.40
336	407104.54	2192657.34	407084.96	2192711.80
337	407103.79	2192644.92	407081.52	2192710.67
338	407109.40	2192635.55	407082.58	2192701.55
339	407122.52	2192627.27	407085.76	2192679.65
340	407130.80	2192619.23	407093.10	2192672.44
341	407134.19	2192609.17	407092.97	2192668.87
342	407130.77	2192598.71	407087.94	2192648.83
343	407123.51	2192585.25	407089.42	2192629.65
344	407118.40	2192573.76	407084.23	2192612.25
345	407116.95	2192561.03	407076.29	2192604.95
346	407123.40	2192542.22	407069.42	2192603.26
347	407138.40	2192516.36	407067.19	2192598.28
348	407148.10	2192496.91	407072.70	2192590.98
349	407166.54	2192479.91	407096.40	2192563.78
350	407181.07	2192465.77	407108.06	2192553.54
351	407207.45	2192439.08	407120.63	2192536.08
352	407236.71	2192415.73	407130.68	2192517.69
353	407251.47	2192406.82	407146.84	2192491.21
354	407264.83	2192405.38	407170.90	2192466.43
355	407271.70	2192402.53	407192.88	2192443.96
356	407288.64	2192400.81	407210.19	2192426.66
357	407316.67	2192396.96	407227.97	2192412.80
358	407326.79	2192393.51	407250.30	2192400.78
359	407339.46	2192394.34	407271.25	2192395.39
360	407361.85	2192398.57	407303.32	2192389.57
361	407386.51	2192402.82	407335.97	2192387.18
362	407408.05	2192410.17	407369.68	2192392.60
363	407434.57	2192420.65	407399.89	2192400.04
364	407459.15	2192431.42	407426.56	2192409.67
365	407480.39	2192440.16	407462.60	2192424.44
366	407498.88	2192444.00	407477.52	2192434.07
367	407513.17	2192444.86	407484.50	2192435.79
368	407519.02	2192445.27	407502.12	2192438.33
369	407525.77	2192450.89	407515.69	2192436.51
370	407533.17	2192457.18	407525.30	2192436.11
371	407547.14	2192459.02	407536.57	2192436.51
372	407561.10	2192460.17	407554.43	2192436.19
373	407569.49	2192464.87	407568.56	2192443.25
374	407589.33	2192470.34	407575.38	2192450.24
375	407599.13	2192467.23	407579.51	2192456.59
376	407622.94	2192463.00	407590.46	2192460.00

377	407638.33	2192462.89	407605.07	2192458.02
378	407654.88	2192465.72	407625.23	2192455.56
379	407659.48	2192464.38	407646.90	2192451.51
380	407673.82	2192460.78	407673.89	2192445.64
381	407684.29	2192455.70	407684.34	2192439.62
382	407697.34	2192452.95	407712.74	2192426.53
383	407720.27	2192440.56	407746.79	2192410.09
384	407749.69	2192431.20	407769.95	2192394.69
385	407785.27	2192413.12	407788.47	2192381.98
386	407809.57	2192395.85	407800.34	2192372.39
387	407833.93	2192375.35	407809.18	2192363.68
388	407838.24	2192371.15	407807.02	2192356.61
389	407839.66	2192369.77	407800.12	2192357.88
390	407850.08	2192359.61	407781.15	2192372.16
391	407860.99	2192346.08	407760.99	2192383.28
392	407866.32	2192337.03	407750.03	2192378.51
393	407863.84	2192328.18	407738.68	2192377.88
394	407860.06	2192320.32	407742.73	2192372.88
395	407860.25	2192306.31	407769.56	2192361.37
396	407862.88	2192280.92	407805.91	2192342.88
397	407864.05	2192243.79	407814.38	2192336.69
398	407866.85	2192206.02	407826.76	2192334.89
399	407871.85	2192173.83	407836.39	2192326.90
400	407872.22	2192172.08	407847.08	2192314.89
401	407872.64	2192170.14	407851.52	2192303.88
402	407877.43	2192147.85	407855.71	2192296.42
403	407889.73	2192129.11	407858.67	2192290.71
404	407906.38	2192112.40	407861.00	2192274.36
405	407915.56	2192106.67	407859.30	2192261.82
406	407924.88	2192103.87	407860.05	2192243.85
407	407930.75	2192102.79	407861.26	2192230.91
408	407934.76	2192101.29	407862.58	2192214.14
409	407937.45	2192100.29	407863.54	2192202.55
410	407941.71	2192096.43	407865.60	2192181.01
411	407945.41	2192089.00	407865.44	2192165.14
412	407952.27	2192086.17	407870.42	2192153.92
413	407960.46	2192082.03	407875.28	2192140.80
414	407966.40	2192076.74	407882.07	2192128.63
415	407973.15	2192070.01	407892.59	2192116.67
416	407975.16	2192069.82	407903.49	2192106.51
417	407983.85	2192072.92	407912.11	2192101.00
418	407993.96	2192070.77	407919.79	2192096.40
419	408011.57	2192066.79	407924.87	2192095.02

420	408020.71	2192068.53	407931.75	2192095.29
421	408037.29	2192068.77	407939.63	2192089.31
422	408043.83	2192068.86	407947.52	2192084.44
423	408059.34	2192074.94	407965.06	2192075.42
424	408072.35	2192075.44	407970.48	2192065.63
425	408081.52	2192080.47	407977.43	2192063.25
426	408093.77	2192087.82	407986.08	2192066.32
427	408109.66	2192091.30	407993.42	2192063.80
428	408130.75	2192094.19	408005.99	2192060.83
429	408152.77	2192100.69	408022.92	2192060.23
430	408171.26	2192105.20	408044.75	2192063.74
431	408184.86	2192107.00	408063.07	2192068.24
432	408203.70	2192108.58	408080.15	2192071.95
433	408221.61	2192106.86	408116.12	2192081.40
434	408234.59	2192109.01	408135.04	2192085.43
435	408248.03	2192115.39	408168.51	2192091.52
436	408257.73	2192119.77	408183.31	2192096.43
437	408268.16	2192117.28	408207.72	2192098.54
438	408277.74	2192110.90	408222.43	2192097.66
439	408288.69	2192114.31	408248.53	2192096.56
440	408302.69	2192113.55	408269.77	2192094.48
441	408311.42	2192117.58	408277.49	2192097.39
442	408322.71	2192122.62	408291.73	2192106.18
443	408330.53	2192122.73	408321.52	2192110.36
444	408343.89	2192120.31	408339.72	2192110.52
445	408357.23	2192120.17	408354.27	2192105.60
446	408362.50	2192115.04	408365.39	2192098.35
447	408366.90	2192103.36	408373.09	2192088.29
448	408379.11	2192089.52	408382.43	2192080.35
449	408398.13	2192079.34	408395.10	2192074.93
450	408414.44	2192074.70	408413.54	2192068.66
451	408430.76	2192070.36	408433.39	2192061.09
452	408442.14	2192070.85	408445.87	2192053.58
453	408451.61	2192072.94	408463.18	2192045.54
454	408457.50	2192070.10	408480.71	2192038.06
455	408462.14	2192063.32	408495.65	2192032.97
456	408468.34	2192062.42	408519.47	2192019.54
457	408477.18	2192057.65	408529.79	2192012.79
458	408481.21	2192048.91	408536.00	2192003.73
459	408486.82	2192043.14	408536.60	2191991.16
460	408510.69	2192033.04	408532.90	2191981.15
461	408532.02	2192020.30	408528.29	2191970.82
462	408539.57	2192015.21	408528.32	2191965.49

463	408547.02	2192016.93	408534.23	2191948.74
464	408556.52	2192014.46	408532.40	2191943.18
465	408571.17	2192000.65	408523.84	2191938.37
466	408583.48	2191981.27	408522.08	2191919.10
467	408591.00	2191955.65	408527.63	2191913.01
468	408596.88	2191929.66	408532.13	2191916.06
469	408597.55	2191905.62	408538.62	2191933.58
470	408590.37	2191884.00	408548.61	2191947.24
471	408576.98	2191864.92	408544.82	2191961.58
472	408550.61	2191843.37	408549.04	2191983.00
473	408534.55	2191829.78	408559.22	2191986.44
474	408514.27	2191814.51	408569.81	2191981.54
475	408509.55	2191804.02	408581.84	2191962.49
476	408502.87	2191792.84	408590.31	2191928.89
477	408497.08	2191788.21	408587.40	2191907.19
478	408487.48	2191777.64	408578.14	2191892.25
479	408474.49	2191776.15	408574.83	2191893.44
480	408468.28	2191771.18	408579.60	2191915.93
481	408452.40	2191751.75	408574.70	2191912.09
482	408429.10	2191720.78	408564.93	2191893.14
483	408421.38	2191691.68	408544.85	2191874.23
484	408421.49	2191659.42	408517.42	2191858.91
485	408429.77	2191626.63	408506.83	2191848.19
486	408445.41	2191601.42	408494.80	2191835.09
487	408462.60	2191581.79	408485.14	2191829.54
488	408482.96	2191567.76	408480.38	2191819.62
489	408492.26	2191553.87	408470.85	2191798.71
490	408508.91	2191525.11	408464.46	2191788.37
491	408521.48	2191510.94	408443.20	2191772.65
492	408543.30	2191485.84	408439.63	2191765.77
493	408560.38	2191473.06	408439.63	2191751.49
494	408583.97	2191460.99	408439.07	2191742.95
495	408601.41	2191446.26	408431.53	2191731.68
496	408631.60	2191427.80	408421.21	2191706.52
497	408666.89	2191418.52	408414.54	2191684.93
498	408710.95	2191414.72	408412.40	2191670.25
499	408740.87	2191415.15	408411.92	2191656.83
500	408773.34	2191418.87	408414.23	2191641.51
501	408805.59	2191425.25	408418.91	2191628.57
502	408820.47	2191431.02	408423.06	2191616.81
503	408838.88	2191439.08	408429.41	2191604.91
504	408851.54	2191450.67	408436.56	2191592.54
505	408861.35	2191470.68	408449.72	2191576.33

506	408867.93	2191488.69	408460.30	2191565.55
507	408869.69	2191501.11	408468.50	2191557.74
508	408876.81	2191509.67	408477.50	2191550.07
509	408882.82	2191522.13	408488.28	2191540.75
510	408888.14	2191535.89	408493.51	2191538.50
511	408894.86	2191543.81	408499.99	2191528.77
512	408896.36	2191552.95	408508.26	2191519.91
513	408897.09	2191570.56	408516.46	2191508.80
514	408902.50	2191578.77	408525.26	2191497.68
515	408904.22	2191595.74	408534.45	2191488.69
516	408909.91	2191606.90	408543.50	2191477.92
517	408911.42	2191615.71	408554.06	2191470.46
518	408909.63	2191626.78	408565.25	2191460.30
519	408905.22	2191640.40	408578.51	2191451.41
520	408903.07	2191654.36	408588.96	2191444.62
521	408896.01	2191669.59	408596.03	2191438.40
522	408888.41	2191700.09	408604.96	2191432.45
523	408876.04	2191723.71	408616.67	2191427.23
524	408864.43	2191740.48	408635.13	2191419.75
525	408854.98	2191764.47	408653.58	2191413.40
526	408851.53	2191785.26	408673.95	2191409.23
527	408847.38	2191795.63	408695.72	2191406.32
528	408844.43	2191821.65	408716.02	2191405.07
529	408844.75	2191844.78	408736.73	2191404.14
530	408858.91	2191878.55	408756.97	2191404.47
531	408874.89	2191898.32	408775.16	2191405.13
532	408894.80	2191915.54	408792.22	2191405.79
533	408913.98	2191925.31	408800.09	2191404.93
534	408934.73	2191929.52	408806.84	2191405.33
535	408957.82	2191929.52	408808.16	2191407.18
536	408982.90	2191925.97	408820.00	2191409.63
537	409015.84	2191918.95	408823.31	2191409.30
538	409037.68	2191914.68	408837.67	2191415.05
539	409071.90	2191907.31	408845.14	2191418.43
540	409084.00	2191904.23	408860.02	2191429.34
541	409087.63	2191897.76	408870.67	2191439.93
542	409084.81	2191892.52	408878.81	2191452.10
543	409074.16	2191885.52	408879.73	2191458.91
544	409071.04	2191876.35	408881.65	2191465.72
545	409079.73	2191883.31	408884.89	2191468.83
546	409096.72	2191899.83	408893.29	2191495.82
547	409111.46	2191915.70	408898.32	2191527.83
548	409131.39	2191930.96	408901.83	2191550.32

549	409162.92	2191956.31	408909.24	2191591.33
550	409185.21	2191982.36	408913.53	2191604.96
551	409201.17	2192003.76	408914.26	2191618.59
552	409217.43	2192026.47	408911.88	2191633.53
553	409225.14	2192032.44	408909.30	2191652.19
554	409237.55	2192052.15	408903.94	2191668.46
555	409255.84	2192069.35	408900.28	2191679.97
556	409274.26	2192076.79	408891.40	2191704.37
557	409288.91	2192076.33	408878.38	2191732.94
558	409311.09	2192070.45	408867.16	2191754.00
559	409335.19	2192067.86	408855.84	2191784.70
560	409359.67	2192060.71	408854.25	2191797.40
561	409381.22	2192054.17	408853.08	2191821.00
562	409407.69	2192044.11	408850.23	2191833.59
563	409428.90	2192030.75	408850.01	2191858.04
564	409478.57	2192012.53	408854.88	2191876.88
565	409532.26	2191986.57	408862.29	2191890.85
566	409592.76	2191965.27	408871.18	2191899.74
567	409615.67	2191954.85	408882.61	2191910.85
568	409637.57	2191945.70	408899.54	2191925.98
569	409674.03	2191930.91	408914.78	2191933.50
570	409688.82	2191919.38	408926.21	2191935.72
571	409707.74	2191914.12	408956.38	2191933.07
572	409728.07	2191902.03	408965.37	2191927.89
573	409760.31	2191887.07	408978.81	2191922.70
574	409773.68	2191884.00	408994.48	2191917.20
1	409031.80	2191940.76	409031.80	2191940.76
575	414566.71	2190318.19	408177.25	2192131.50
576	414556.67	2190315.75	408158.36	2192150.39
577	414546.41	2190306.83	408137.72	2192164.36
578	414536.50	2190285.20	408121.21	2192173.41
579	414534.55	2190274.12	408113.44	2192185.79
580	414535.00	2190265.66	408087.24	2192210.08
581	414542.89	2190258.93	408066.13	2192219.60
582	414561.49	2190252.40	408051.05	2192220.72
583	414580.33	2190252.33	408035.01	2192214.84
584	414588.76	2190253.42	408026.28	2192211.35
585	414605.27	2190255.63	408013.74	2192211.67
586	414622.53	2190253.28	407991.04	2192217.22
587	414639.44	2190251.23	407968.81	2192226.75
588	414647.24	2190250.38	407949.61	2192238.81
589	414654.70	2190251.45	407929.13	2192258.82

590	414660.21	2190252.51	407916.59	2192274.53
591	414661.10	2190257.39	407903.41	2192288.18
592	414655.20	2190260.89	407897.06	2192293.74
593	414637.97	2190263.26	407891.03	2192292.63
594	414622.31	2190268.55	407887.06	2192282.63
595	414603.10	2190271.86	407885.31	2192259.13
596	414588.68	2190280.42	407894.20	2192238.34
597	414580.52	2190283.24	407887.06	2192204.68
598	414571.65	2190291.58	407889.76	2192168.01
599	414572.86	2190296.80	407901.35	2192133.09
600	414571.99	2190312.73	407921.98	2192117.21
601	-	-	407952.94	2192109.27
602	-	-	407975.96	2192106.57
603	-	-	408015.49	2192100.54
604	-	-	408057.24	2192091.02
605	-	-	408085.81	2192092.92
606	-	-	408117.25	2192103.88
607	-	-	408149.79	2192112.92
608	-	-	408168.52	2192123.88
575	414566.71	2190318.19	408177.25	2192131.50
609	425426.83	2190603.15	408435.96	2192083.13
610	425441.12	2190600.77	408422.10	2192096.68
611	425436.28	2190577.33	408398.39	2192111.18
612	425394.17	2190532.58	408387.28	2192111.07
613	425368.78	2190497.17	408385.06	2192104.30
614	425356.55	2190446.36	408395.96	2192089.69
615	425327.30	2190409.62	408419.88	2192082.50
609	425426.83	2190603.15	408435.96	2192083.13

2. Уточняемая часть внешней границы водоохраной зоны р. Тулова

	по данным ЕГРН		уточняемые границы	
	X	Y	X	Y
1	-	-	406712,43	2192592,41
2	-	-	406800,15	2192610,80
3	-	-	406844,47	2192629,13
4	-	-	406873,11	2192646,55
5	-	-	406867,27	2192604,24
6	-	-	406870,72	2192560,83
7	-	-	406883,49	2192519,19
8	-	-	406901,18	2192486,73
9	-	-	406954,70	2192422,63
10	-	-	406995,43	2192360,54

11	-	-	407068,78	2192285,22
12	-	-	407117,36	2192246,16
13	-	-	407177,08	2192214,66
14	-	-	407271,33	2192192,13
15	-	-	407346,02	2192187,43
16	-	-	407447,72	2192205,84
17	-	-	407530,68	2192236,19
18	-	-	407593,28	2192240,02
19	-	-	407623,19	2192212,52
20	-	-	407663,92	2192189,07
21	-	-	407667,53	2192136,27
22	-	-	407675,55	2192102,34
23	-	-	407697,20	2192049,75
24	-	-	407730,67	2191997,95
25	-	-	407786,29	2191944,43
26	-	-	407888,49	2191883,20
27	-	-	407945,45	2191865,81
28	-	-	408025,72	2191860,24
29	-	-	408082,23	2191867,27
30	-	-	408217,71	2191897,67
31	-	-	408285,13	2191895,11
32	-	-	408250,74	2191831,54
33	-	-	408221,50	2191737,27
34	-	-	408214,49	2191699,13
35	-	-	408211,93	2191654,02
36	-	-	408216,44	2191611,79
37	-	-	408238,44	2191539,88
38	-	-	408281,31	2191466,44
39	-	-	408404,08	2191334,51
40	-	-	408500,64	2191261,81
41	-	-	408569,38	2191230,86
42	-	-	408613,50	2191217,45
43	-	-	408676,27	2191207,26
44	-	-	408831,52	2191206,85
45	-	-	408877,80	2191216,86
46	-	-	408927,42	2191236,13
47	-	-	408963,42	2191257,14
48	-	-	409001,01	2191287,48
49	-	-	409031,50	2191321,02
50	-	-	409057,50	2191362,26
51	-	-	409089,48	2191456,91
52	-	-	409110,97	2191573,01
53	-	-	409114,23	2191614,66

54	-	-	409105,76	2191689,69
55	-	-	409090,48	2191741,77
56	-	-	409089,20	2192138,13
57	-	-	409005,47	2192161,86
58	-	-	408935,31	2192168,64
59	-	-	408848,43	2192156,45
60	-	-	408782,87	2192127,98
61	-	-	408750,13	2192223,37
62	-	-	408697,50	2192301,24
63	-	-	408656,38	2192334,65
64	-	-	408518,98	2192413,92
65	-	-	408456,28	2192437,71
66	-	-	408375,15	2192452,50
67	-	-	408289,82	2192453,25
68	-	-	408191,67	2192465,06
69	-	-	408148,25	2192461,61
70	-	-	408105,36	2192448,26
71	-	-	408070,52	2192455,50
72	-	-	407992,48	2192541,48
73	-	-	407926,95	2192593,10
74	-	-	407871,16	2192628,50
75	-	-	407786,96	2192665,83
76	-	-	407657,13	2192694,16
77	-	-	407568,03	2192738,73
78	-	-	407524,18	2192752,78
79	-	-	407477,56	2192759,72
80	-	-	407425,62	2192754,45
81	-	-	407384,58	2192739,88
82	-	-	407343,73	2192713,53
83	-	-	407286,89	2192874,92
84	-	-	407262,96	2192920,42
85	-	-	407225,17	2192975,95
86	-	-	407187,86	2193016,35
87	-	-	407112,40	2193084,71
88	-	-	407031,29	2193142,34
89	-	-	406966,38	2193172,80
90	-	-	406901,98	2193187,59
91	-	-	406867,21	2193190,15
92	-	-	406832,52	2193186,64
93	-	-	406790,89	2193173,88
94	-	-	406728,38	2193146,64
95	-	-	406692,63	2193124,03

96	-	-	406653,36	2193083,86
97	-	-	406621,31	2193031,39
98	-	-	406605,94	2193023,16

3. Уточняемая часть внутренней границы водоохраной зоны р. Тулва

	по данным ЕГРН		уточняемые границы	
	Х	У	Х	У
1	409031.80	2191940.76	409031.80	2191940.76
2	409007.69	2191944.97	409015.26	2191952.29
3	408981.62	2191948.86	409006.29	2191954.83
4	408955.91	2191950.79	408987.55	2191960.78
5	408928.61	2191949.43	408968.11	2191965.37
6	408903.98	2191943.85	408953.08	2191968.23
7	408885.57	2191934.80	408938.10	2191968.65
8	408862.10	2191916.24	408925.14	2191967.91
9	408843.86	2191894.14	408912.81	2191966.33
10	408831.57	2191866.93	408901.38	2191963.57
11	408824.36	2191825.13	408891.33	2191958.97
12	408827.09	2191793.57	408883.49	2191955.16
13	408833.66	2191764.98	408872.86	2191946.75
14	408839.58	2191737.39	408863.12	2191938.44
15	408846.56	2191726.72	408853.70	2191929.02
16	408856.18	2191713.83	408843.97	2191917.91
17	408874.43	2191687.69	408836.84	2191906.57
18	408883.26	2191660.45	408829.86	2191893.98
19	408883.10	2191625.91	408824.25	2191879.58
20	408879.21	2191578.94	408820.33	2191863.82
21	408868.58	2191549.15	408819.17	2191851.22
22	408859.55	2191521.32	408818.85	2191832.70
23	408851.48	2191492.87	408819.17	2191817.57
24	408835.29	2191466.25	408820.44	2191804.97
25	408821.14	2191454.96	408823.61	2191792.27
26	408799.77	2191448.14	408827.11	2191775.44
27	408771.79	2191444.50	408828.80	2191756.39
28	408749.86	2191443.55	408829.65	2191736.92
29	408733.66	2191442.66	408827.74	2191716.07
30	408707.68	2191439.67	408825.94	2191701.36
31	408680.71	2191439.29	408829.83	2191677.33
32	408656.92	2191442.24	408845.70	2191642.93
33	408638.64	2191447.51	408856.60	2191628.11
34	408624.89	2191453.83	408860.94	2191625.47
35	408608.09	2191468.90	408862.43	2191629.70
36	408592.91	2191476.84	408852.79	2191653.09

37	408575.19	2191486.36	408838.72	2191681.45
38	408559.64	2191502.43	408835.01	2191698.07
39	408544.59	2191522.34	408837.98	2191707.70
40	408527.00	2191546.84	408842.85	2191701.77
41	408513.56	2191567.84	408850.04	2191678.91
42	408494.92	2191586.89	408854.28	2191669.71
43	408482.39	2191598.77	408855.65	2191675.21
44	408472.14	2191610.35	408849.20	2191701.14
45	408463.42	2191629.44	408850.57	2191709.29
46	408455.12	2191643.67	408856.71	2191697.44
47	408447.45	2191654.96	408865.47	2191673.12
48	408441.41	2191668.23	408872.90	2191657.75
49	408442.47	2191686.18	408876.82	2191644.41
50	408448.72	2191703.54	408874.49	2191628.01
51	408455.72	2191714.38	408878.72	2191611.82
52	408464.02	2191725.58	408873.14	2191591.51
53	408467.07	2191739.64	408867.18	2191569.28
54	408473.80	2191746.91	408856.73	2191551.16
55	408485.77	2191751.30	408845.75	2191529.46
56	408495.03	2191762.84	408828.95	2191510.28
57	408512.48	2191770.91	408821.54	2191501.81
58	408545.01	2191793.52	408824.58	2191501.15
59	408559.19	2191801.85	408843.24	2191520.60
60	408564.32	2191807.80	408846.81	2191523.11
61	408576.37	2191829.47	408847.47	2191520.33
62	408594.03	2191845.68	408836.36	2191502.87
63	408611.81	2191875.91	408819.69	2191488.72
64	408621.85	2191902.12	408793.10	2191475.75
65	408624.36	2191932.45	408765.19	2191469.40
66	408620.32	2191964.32	408736.35	2191461.46
67	408610.84	2191992.22	408706.71	2191456.70
68	408596.21	2192014.16	408681.31	2191457.49
69	408585.70	2192022.50	408647.97	2191466.36
70	408577.79	2192030.20	408613.31	2191479.06
71	408573.09	2192039.57	408580.24	2191503.80
72	408567.35	2192044.07	408555.24	2191531.18
73	408558.39	2192044.92	408522.69	2191586.21
74	408548.48	2192043.15	408503.38	2191619.68
75	408539.56	2192042.69	408488.03	2191658.71
76	408523.62	2192053.05	408484.99	2191689.00
77	408507.23	2192062.92	408482.35	2191690.46
78	408493.15	2192069.90	408477.93	2191685.27
79	408477.35	2192084.02	408473.16	2191665.27

80	408463.47	2192100.12	408474.38	2191640.51
81	408445.04	2192115.17	408484.44	2191618.76
82	408426.37	2192124.35	408497.45	2191589.81
83	408404.41	2192137.40	408496.29	2191587.56
84	408376.64	2192146.79	408482.93	2191600.53
85	408352.49	2192152.31	408467.65	2191622.69
86	408335.58	2192152.07	408456.87	2191642.80
87	408322.62	2192148.64	408454.95	2191643.99
88	408303.56	2192140.89	408452.50	2191634.79
89	408279.20	2192137.30	408448.60	2191636.18
90	408258.39	2192138.29	408442.78	2191650.67
91	408249.15	2192139.29	408442.65	2191674.15
92	408247.93	2192139.42	408451.18	2191699.42
93	408231.68	2192141.18	408461.70	2191712.98
94	408208.22	2192144.77	408487.27	2191741.99
95	408192.14	2192154.97	408516.40	2191761.67
96	408178.65	2192166.18	408529.26	2191772.86
97	408159.94	2192178.95	408551.72	2191787.39
98	408145.11	2192193.09	408562.44	2191797.95
99	408131.52	2192210.18	408582.84	2191819.85
100	408118.39	2192220.09	408601.41	2191839.06
101	408099.73	2192227.96	408616.81	2191864.31
102	408083.34	2192238.17	408624.83	2191884.15
103	408067.34	2192242.19	408631.02	2191913.36
104	408051.83	2192247.83	408629.27	2191939.39
105	408040.04	2192253.86	408621.33	2191973.53
106	408029.96	2192253.71	408609.51	2191996.46
107	408018.59	2192252.90	408597.84	2192018.29
108	408011.24	2192242.38	408595.36	2192047.84
109	408006.73	2192239.70	408589.07	2192078.73
110	407997.30	2192239.24	408570.06	2192136.32
111	407987.83	2192241.74	408551.94	2192164.08
112	407977.99	2192248.44	408483.15	2192206.20
113	407962.94	2192254.42	408444.20	2192228.42
114	407944.86	2192268.49	408403.77	2192244.72
115	407929.57	2192285.23	408369.69	2192251.50
116	407915.00	2192303.29	408360.50	2192253.03
117	407909.85	2192323.42	408328.61	2192252.42
118	407904.06	2192341.91	408309.55	2192252.12
119	407897.48	2192347.02	408274.94	2192253.71
120	407880.96	2192366.34	408218.11	2192259.58
121	407861.44	2192390.19	408185.72	2192265.14
122	407839.71	2192408.79	408186.52	2192260.06

123	407808.11	2192432.29	408203.82	2192253.55
124	407790.07	2192443.46	408225.57	2192249.26
125	407763.22	2192456.44	408256.84	2192232.60
126	407734.06	2192472.00	408274.31	2192229.74
127	407707.92	2192480.43	408306.37	2192234.98
128	407683.76	2192487.27	408333.63	2192238.52
129	407661.30	2192488.93	408337.65	2192226.14
130	407639.80	2192491.23	408328.02	2192208.89
131	407614.03	2192496.41	408334.37	2192209.95
132	407595.75	2192501.68	408347.50	2192227.73
133	407580.37	2192507.99	408362.51	2192237.05
134	407569.91	2192511.10	408400.31	2192226.77
135	407563.50	2192504.17	408446.46	2192207.09
136	407566.82	2192499.67	408486.46	2192187.19
137	407569.52	2192492.86	408526.04	2192161.16
138	407556.93	2192486.17	408554.41	2192132.37
139	407533.05	2192475.93	408564.57	2192104.85
140	407513.29	2192470.43	408565.25	2192100.42
141	407498.01	2192470.22	408561.71	2192099.89
142	407463.91	2192466.48	408555.09	2192106.29
143	407433.78	2192457.27	408533.68	2192135.05
144	407414.71	2192448.87	408513.27	2192145.99
145	407393.34	2192441.40	408494.85	2192151.37
146	407366.51	2192430.26	408487.62	2192141.37
147	407332.76	2192423.60	408497.95	2192113.30
148	407304.78	2192423.87	408519.53	2192091.68
149	407286.82	2192429.49	408530.00	2192067.08
150	407263.89	2192440.56	408550.16	2192052.63
151	407251.03	2192453.42	408553.18	2192046.92
152	407239.27	2192457.50	408549.69	2192045.96
153	407221.57	2192467.04	408533.34	2192051.84
154	407200.52	2192483.36	408514.29	2192060.73
155	407181.01	2192506.23	408491.74	2192073.59
156	407172.66	2192522.74	408470.63	2192098.51
157	407161.72	2192536.28	408455.23	2192112.00
158	407155.91	2192550.21	408426.34	2192131.05
159	407147.03	2192563.78	408401.62	2192143.23
160	407142.95	2192577.07	408389.00	2192144.42
161	407141.72	2192595.65	408375.66	2192148.07
162	407148.03	2192609.43	408344.47	2192154.66
163	407149.14	2192623.13	408326.85	2192155.06
164	407148.67	2192633.87	408302.16	2192153.15
165	407144.65	2192643.26	408301.13	2192149.58

166	407142.72	2192666.37	408306.77	2192145.93
167	407140.72	2192682.97	408295.18	2192142.67
168	407130.41	2192709.56	408272.48	2192139.82
169	407122.57	2192735.20	408246.60	2192139.97
170	407115.39	2192760.86	408228.98	2192142.28
171	407099.60	2192797.16	408216.64	2192147.95
172	407087.54	2192822.73	408192.74	2192160.10
173	407072.56	2192846.32	408178.30	2192168.51
174	407050.81	2192867.85	408164.49	2192178.43
175	407031.05	2192885.49	408156.79	2192187.40
176	407002.38	2192911.50	408148.13	2192199.86
177	406974.34	2192934.93	408141.55	2192208.04
178	406948.08	2192952.81	408134.32	2192213.44
179	406930.33	2192965.61	408124.16	2192218.28
180	406917.70	2192973.59	408116.78	2192223.68
181	406907.94	2192973.76	408106.07	2192233.12
182	406899.23	2192968.77	408098.92	2192236.40
183	406888.92	2192960.79	408075.77	2192245.79
184	406884.50	2192956.39	408051.83	2192255.58
185	406879.62	2192951.54	408029.47	2192259.69
186	406867.08	2192940.93	408003.01	2192261.14
187	406861.74	2192929.80	407980.65	2192262.60
188	406852.07	2192916.30	407962.79	2192262.73
189	406837.25	2192905.00	407949.83	2192271.46
190	406816.97	2192890.04	407933.16	2192286.41
191	406791.39	2192881.22	407919.93	2192307.44
192	406774.16	2192877.40	407914.90	2192327.42
193	406767.75	2192873.73	407906.17	2192341.57
194	406752.51	2192869.59	407884.37	2192362.69
195	406729.22	2192860.48	407869.13	2192382.06
196	406709.24	2192852.90	407857.70	2192393.70
197	-	-	407832.20	2192414.02
198	-	-	407811.35	2192429.89
199	-	-	407796.11	2192440.69
200	-	-	407773.56	2192453.92
201	-	-	407762.03	2192459.42
202	-	-	407730.28	2192474.02
203	-	-	407699.48	2192483.13
204	-	-	407672.28	2192488.42
205	-	-	407641.38	2192493.07
206	-	-	407602.22	2192501.33
207	-	-	407577.35	2192510.33
208	-	-	407560.00	2192517.92

209	-	-	407538.16	2192527.64
210	-	-	407504.82	2192546.69
211	-	-	407488.59	2192555.17
212	-	-	407471.61	2192559.80
213	-	-	407476.57	2192550.66
214	-	-	407508.95	2192533.99
215	-	-	407529.23	2192523.43
216	-	-	407527.49	2192521.09
217	-	-	407523.57	2192518.52
218	-	-	407515.62	2192518.12
219	-	-	407495.72	2192527.68
220	-	-	407480.22	2192529.70
221	-	-	407466.72	2192531.61
222	-	-	407460.53	2192528.91
223	-	-	407464.18	2192523.99
224	-	-	407489.43	2192517.16
225	-	-	407516.26	2192509.54
226	-	-	407520.54	2192499.07
227	-	-	407515.74	2192488.16
228	-	-	407513.89	2192485.48
229	-	-	407495.41	2192479.94
230	-	-	407461.56	2192472.65
231	-	-	407436.37	2192462.17
232	-	-	407408.54	2192454.24
233	-	-	407375.83	2192446.30
234	-	-	407346.41	2192438.47
235	-	-	407326.44	2192432.75
236	-	-	407300.93	2192432.86
237	-	-	407274.90	2192437.52
238	-	-	407266.64	2192445.88
239	-	-	407255.74	2192453.81
240	-	-	407234.10	2192464.42
241	-	-	407203.62	2192492.05
242	-	-	407179.80	2192528.32
243	-	-	407163.06	2192554.67
244	-	-	407150.91	2192587.61
245	-	-	407155.91	2192600.39
246	-	-	407159.01	2192624.60
247	-	-	407153.93	2192650.56
248	-	-	407140.51	2192689.53
249	-	-	407124.88	2192737.47
250	-	-	407114.32	2192769.70
251	-	-	407102.89	2192796.53

252	-	-	407091.14	2192818.04
253	-	-	407077.57	2192839.31
254	-	-	407068.76	2192851.30
255	-	-	407051.93	2192869.63
256	-	-	407041.14	2192879.64
257	-	-	407019.94	2192900.35
258	-	-	407007.16	2192911.62
259	-	-	406992.16	2192924.88
260	-	-	406982.87	2192931.31
261	-	-	406964.22	2192944.09
262	-	-	406944.54	2192960.36
263	-	-	406923.26	2192974.01
264	-	-	406900.56	2192983.93
265	-	-	406879.37	2192988.14
266	-	-	406869.96	2192990.16
267	-	-	406852.73	2192969.11
268	-	-	406840.24	2192971.94
269	-	-	406831.64	2192970.55
270	-	-	406820.99	2192969.36
271	-	-	406816.56	2192967.05
272	-	-	406812.32	2192962.48
273	-	-	406805.51	2192951.50
274	-	-	406800.55	2192942.70
275	-	-	406800.62	2192939.33
276	-	-	406812.52	2192937.01
277	-	-	406826.54	2192941.12
278	-	-	406842.41	2192948.55
279	-	-	406864.47	2192956.41
280	-	-	406874.87	2192954.50
281	-	-	406875.82	2192952.60
282	-	-	406869.63	2192949.50
283	-	-	406856.69	2192946.57
284	-	-	406853.84	2192941.17
285	-	-	406850.50	2192933.14
286	-	-	406831.45	2192923.61
287	-	-	406807.64	2192910.59
288	-	-	406786.84	2192893.61
289	-	-	406758.11	2192872.81
290	-	-	406730.01	2192860.11
291	-	-	406708.32	2192851.34
292	406688.20	2192844.78	406688.20	2192844.78
293	406579.80	2192788.66	406579.80	2192788.66
294	406590.47	2192793.71	406680.93	2192789.92

295	406603.77	2192805.33	406720.11	2192796.17
296	406622.85	2192813.73	406738.76	2192801.15
297	406642.00	2192817.26	406754.40	2192807.71
298	406664.41	2192820.49	406763.76	2192814.06
299	406684.20	2192824.35	406781.22	2192834.24
300	406692.27	2192828.05	406794.19	2192845.35
301	406706.63	2192833.20	406813.50	2192858.31
302	406729.21	2192839.00	406839.89	2192871.83
303	406749.93	2192846.79	406850.34	2192877.36
304	406766.12	2192851.24	406874.68	2192884.04
305	406774.64	2192847.13	406888.44	2192889.80
306	406773.10	2192840.92	406896.71	2192890.59
307	406761.53	2192830.65	406910.14	2192887.35
308	406754.48	2192823.38	406926.01	2192882.85
309	406759.06	2192821.17	406932.23	2192877.56
310	406762.58	2192826.09	406943.08	2192872.80
311	406776.72	2192838.34	406951.88	2192871.87
312	406794.71	2192854.58	406962.46	2192868.50
313	406817.62	2192867.94	406970.27	2192861.75
314	406854.87	2192885.95	406982.24	2192855.07
315	406874.19	2192891.11	406987.79	2192846.21
316	406887.39	2192896.18	406999.63	2192840.59
317	406899.09	2192897.32	407007.77	2192833.51
318	406922.63	2192896.34	407018.75	2192829.08
319	406951.22	2192898.70	407021.79	2192822.79
320	406964.20	2192901.15	407027.88	2192818.96
321	406967.69	2192906.73	407034.10	2192816.91
322	406972.54	2192909.42	407049.77	2192812.54
323	406980.40	2192904.97	407056.72	2192800.83
324	406995.96	2192885.95	407068.16	2192785.75
325	407014.78	2192865.67	407074.64	2192769.54
326	407026.56	2192860.30	407078.08	2192747.78
327	407038.17	2192844.49	407081.32	2192747.98
328	407045.82	2192831.87	407086.75	2192751.22
329	407052.03	2192830.00	407088.60	2192748.97
330	407067.75	2192798.94	407084.63	2192734.62
331	407080.04	2192781.18	407088.07	2192727.34
332	407097.99	2192752.42	407092.11	2192718.41
333	407110.24	2192715.75	407094.29	2192709.88
334	407116.15	2192688.45	407095.48	2192696.45
335	407113.16	2192669.18	407094.09	2192695.40
336	407104.54	2192657.34	407084.96	2192711.80
337	407103.79	2192644.92	407081.52	2192710.67

338	407109.40	2192635.55	407082.58	2192701.55
339	407122.52	2192627.27	407085.76	2192679.65
340	407130.80	2192619.23	407093.10	2192672.44
341	407134.19	2192609.17	407092.97	2192668.87
342	407130.77	2192598.71	407087.94	2192648.83
343	407123.51	2192585.25	407089.42	2192629.65
344	407118.40	2192573.76	407084.23	2192612.25
345	407116.95	2192561.03	407076.29	2192604.95
346	407123.40	2192542.22	407069.42	2192603.26
347	407138.40	2192516.36	407067.19	2192598.28
348	407148.10	2192496.91	407072.70	2192590.98
349	407166.54	2192479.91	407096.40	2192563.78
350	407181.07	2192465.77	407108.06	2192553.54
351	407207.45	2192439.08	407120.63	2192536.08
352	407236.71	2192415.73	407130.68	2192517.69
353	407251.47	2192406.82	407146.84	2192491.21
354	407264.83	2192405.38	407170.90	2192466.43
355	407271.70	2192402.53	407192.88	2192443.96
356	407288.64	2192400.81	407210.19	2192426.66
357	407316.67	2192396.96	407227.97	2192412.80
358	407326.79	2192393.51	407250.30	2192400.78
359	407339.46	2192394.34	407271.25	2192395.39
360	407361.85	2192398.57	407303.32	2192389.57
361	407386.51	2192402.82	407335.97	2192387.18
362	407408.05	2192410.17	407369.68	2192392.60
363	407434.57	2192420.65	407399.89	2192400.04
364	407459.15	2192431.42	407426.56	2192409.67
365	407480.39	2192440.16	407462.60	2192424.44
366	407498.88	2192444.00	407477.52	2192434.07
367	407513.17	2192444.86	407484.50	2192435.79
368	407519.02	2192445.27	407502.12	2192438.33
369	407525.77	2192450.89	407515.69	2192436.51
370	407533.17	2192457.18	407525.30	2192436.11
371	407547.14	2192459.02	407536.57	2192436.51
372	407561.10	2192460.17	407554.43	2192436.19
373	407569.49	2192464.87	407568.56	2192443.25
374	407589.33	2192470.34	407575.38	2192450.24
375	407599.13	2192467.23	407579.51	2192456.59
376	407622.94	2192463.00	407590.46	2192460.00
377	407638.33	2192462.89	407605.07	2192458.02
378	407654.88	2192465.72	407625.23	2192455.56
379	407659.48	2192464.38	407646.90	2192451.51
380	407673.82	2192460.78	407673.89	2192445.64

381	407684.29	2192455.70	407684.34	2192439.62
382	407697.34	2192452.95	407712.74	2192426.53
383	407720.27	2192440.56	407746.79	2192410.09
384	407749.69	2192431.20	407769.95	2192394.69
385	407785.27	2192413.12	407788.47	2192381.98
386	407809.57	2192395.85	407800.34	2192372.39
387	407833.93	2192375.35	407809.18	2192363.68
388	407838.24	2192371.15	407807.02	2192356.61
389	407839.66	2192369.77	407800.12	2192357.88
390	407850.08	2192359.61	407781.15	2192372.16
391	407860.99	2192346.08	407760.99	2192383.28
392	407866.32	2192337.03	407750.03	2192378.51
393	407863.84	2192328.18	407738.68	2192377.88
394	407860.06	2192320.32	407742.73	2192372.88
395	407860.25	2192306.31	407769.56	2192361.37
396	407862.88	2192280.92	407805.91	2192342.88
397	407864.05	2192243.79	407814.38	2192336.69
398	407866.85	2192206.02	407826.76	2192334.89
399	407871.85	2192173.83	407836.39	2192326.90
400	407872.22	2192172.08	407847.08	2192314.89
401	407872.64	2192170.14	407851.52	2192303.88
402	407877.43	2192147.85	407855.71	2192296.42
403	407889.73	2192129.11	407858.67	2192290.71
404	407906.38	2192112.40	407861.00	2192274.36
405	407915.56	2192106.67	407859.30	2192261.82
406	407924.88	2192103.87	407860.05	2192243.85
407	407930.75	2192102.79	407861.26	2192230.91
408	407934.76	2192101.29	407862.58	2192214.14
409	407937.45	2192100.29	407863.54	2192202.55
410	407941.71	2192096.43	407865.60	2192181.01
411	407945.41	2192089.00	407865.44	2192165.14
412	407952.27	2192086.17	407870.42	2192153.92
413	407960.46	2192082.03	407875.28	2192140.80
414	407966.40	2192076.74	407882.07	2192128.63
415	407973.15	2192070.01	407892.59	2192116.67
416	407975.16	2192069.82	407903.49	2192106.51
417	407983.85	2192072.92	407912.11	2192101.00
418	407993.96	2192070.77	407919.79	2192096.40
419	408011.57	2192066.79	407924.87	2192095.02
420	408020.71	2192068.53	407931.75	2192095.29
421	408037.29	2192068.77	407939.63	2192089.31
422	408043.83	2192068.86	407947.52	2192084.44
423	408059.34	2192074.94	407965.06	2192075.42

424	408072.35	2192075.44	407970.48	2192065.63
425	408081.52	2192080.47	407977.43	2192063.25
426	408093.77	2192087.82	407986.08	2192066.32
427	408109.66	2192091.30	407993.42	2192063.80
428	408130.75	2192094.19	408005.99	2192060.83
429	408152.77	2192100.69	408022.92	2192060.23
430	408171.26	2192105.20	408044.75	2192063.74
431	408184.86	2192107.00	408063.07	2192068.24
432	408203.70	2192108.58	408080.15	2192071.95
433	408221.61	2192106.86	408116.12	2192081.40
434	408234.59	2192109.01	408135.04	2192085.43
435	408248.03	2192115.39	408168.51	2192091.52
436	408257.73	2192119.77	408183.31	2192096.43
437	408268.16	2192117.28	408207.72	2192098.54
438	408277.74	2192110.90	408222.43	2192097.66
439	408288.69	2192114.31	408248.53	2192096.56
440	408302.69	2192113.55	408269.77	2192094.48
441	408311.42	2192117.58	408277.49	2192097.39
442	408322.71	2192122.62	408291.73	2192106.18
443	408330.53	2192122.73	408321.52	2192110.36
444	408343.89	2192120.31	408339.72	2192110.52
445	408357.23	2192120.17	408354.27	2192105.60
446	408362.50	2192115.04	408365.39	2192098.35
447	408366.90	2192103.36	408373.09	2192088.29
448	408379.11	2192089.52	408382.43	2192080.35
449	408398.13	2192079.34	408395.10	2192074.93
450	408414.44	2192074.70	408413.54	2192068.66
451	408430.76	2192070.36	408433.39	2192061.09
452	408442.14	2192070.85	408445.87	2192053.58
453	408451.61	2192072.94	408463.18	2192045.54
454	408457.50	2192070.10	408480.71	2192038.06
455	408462.14	2192063.32	408495.65	2192032.97
456	408468.34	2192062.42	408519.47	2192019.54
457	408477.18	2192057.65	408529.79	2192012.79
458	408481.21	2192048.91	408536.00	2192003.73
459	408486.82	2192043.14	408536.60	2191991.16
460	408510.69	2192033.04	408532.90	2191981.15
461	408532.02	2192020.30	408528.29	2191970.82
462	408539.57	2192015.21	408528.32	2191965.49
463	408547.02	2192016.93	408534.23	2191948.74
464	408556.52	2192014.46	408532.40	2191943.18
465	408571.17	2192000.65	408523.84	2191938.37
466	408583.48	2191981.27	408522.08	2191919.10

467	408591.00	2191955.65	408527.63	2191913.01
468	408596.88	2191929.66	408532.13	2191916.06
469	408597.55	2191905.62	408538.62	2191933.58
470	408590.37	2191884.00	408548.61	2191947.24
471	408576.98	2191864.92	408544.82	2191961.58
472	408550.61	2191843.37	408549.04	2191983.00
473	408534.55	2191829.78	408559.22	2191986.44
474	408514.27	2191814.51	408569.81	2191981.54
475	408509.55	2191804.02	408581.84	2191962.49
476	408502.87	2191792.84	408590.31	2191928.89
477	408497.08	2191788.21	408587.40	2191907.19
478	408487.48	2191777.64	408578.14	2191892.25
479	408474.49	2191776.15	408574.83	2191893.44
480	408468.28	2191771.18	408579.60	2191915.93
481	408452.40	2191751.75	408574.70	2191912.09
482	408429.10	2191720.78	408564.93	2191893.14
483	408421.38	2191691.68	408544.85	2191874.23
484	408421.49	2191659.42	408517.42	2191858.91
485	408429.77	2191626.63	408506.83	2191848.19
486	408445.41	2191601.42	408494.80	2191835.09
487	408462.60	2191581.79	408485.14	2191829.54
488	408482.96	2191567.76	408480.38	2191819.62
489	408492.26	2191553.87	408470.85	2191798.71
490	408508.91	2191525.11	408464.46	2191788.37
491	408521.48	2191510.94	408443.20	2191772.65
492	408543.30	2191485.84	408439.63	2191765.77
493	408560.38	2191473.06	408439.63	2191751.49
494	408583.97	2191460.99	408439.07	2191742.95
495	408601.41	2191446.26	408431.53	2191731.68
496	408631.60	2191427.80	408421.21	2191706.52
497	408666.89	2191418.52	408414.54	2191684.93
498	408710.95	2191414.72	408412.40	2191670.25
499	408740.87	2191415.15	408411.92	2191656.83
500	408773.34	2191418.87	408414.23	2191641.51
501	408805.59	2191425.25	408418.91	2191628.57
502	408820.47	2191431.02	408423.06	2191616.81
503	408838.88	2191439.08	408429.41	2191604.91
504	408851.54	2191450.67	408436.56	2191592.54
505	408861.35	2191470.68	408449.72	2191576.33
506	408867.93	2191488.69	408460.30	2191565.55
507	408869.69	2191501.11	408468.50	2191557.74
508	408876.81	2191509.67	408477.50	2191550.07
509	408882.82	2191522.13	408488.28	2191540.75

510	408888.14	2191535.89	408493.51	2191538.50
511	408894.86	2191543.81	408499.99	2191528.77
512	408896.36	2191552.95	408508.26	2191519.91
513	408897.09	2191570.56	408516.46	2191508.80
514	408902.50	2191578.77	408525.26	2191497.68
515	408904.22	2191595.74	408534.45	2191488.69
516	408909.91	2191606.90	408543.50	2191477.92
517	408911.42	2191615.71	408554.06	2191470.46
518	408909.63	2191626.78	408565.25	2191460.30
519	408905.22	2191640.40	408578.51	2191451.41
520	408903.07	2191654.36	408588.96	2191444.62
521	408896.01	2191669.59	408596.03	2191438.40
522	408888.41	2191700.09	408604.96	2191432.45
523	408876.04	2191723.71	408616.67	2191427.23
524	408864.43	2191740.48	408635.13	2191419.75
525	408854.98	2191764.47	408653.58	2191413.40
526	408851.53	2191785.26	408673.95	2191409.23
527	408847.38	2191795.63	408695.72	2191406.32
528	408844.43	2191821.65	408716.02	2191405.07
529	408844.75	2191844.78	408736.73	2191404.14
530	408858.91	2191878.55	408756.97	2191404.47
531	408874.89	2191898.32	408775.16	2191405.13
532	408894.80	2191915.54	408792.22	2191405.79
533	408913.98	2191925.31	408800.09	2191404.93
534	408934.73	2191929.52	408806.84	2191405.33
535	408957.82	2191929.52	408808.16	2191407.18
536	408982.90	2191925.97	408820.00	2191409.63
537	409015.84	2191918.95	408823.31	2191409.30
538	409037.68	2191914.68	408837.67	2191415.05
539	409071.90	2191907.31	408845.14	2191418.43
540	409084.00	2191904.23	408860.02	2191429.34
541	409087.63	2191897.76	408870.67	2191439.93
542	409084.81	2191892.52	408878.81	2191452.10
543	409074.16	2191885.52	408879.73	2191458.91
544	409071.04	2191876.35	408881.65	2191465.72
545	409079.73	2191883.31	408884.89	2191468.83
546	409096.72	2191899.83	408893.29	2191495.82
547	409111.46	2191915.70	408898.32	2191527.83
548	409131.39	2191930.96	408901.83	2191550.32
549	409162.92	2191956.31	408909.24	2191591.33
550	409185.21	2191982.36	408913.53	2191604.96
551	409201.17	2192003.76	408914.26	2191618.59
552	409217.43	2192026.47	408911.88	2191633.53

553	409225.14	2192032.44	408909.30	2191652.19
554	409237.55	2192052.15	408903.94	2191668.46
555	409255.84	2192069.35	408900.28	2191679.97
556	409274.26	2192076.79	408891.40	2191704.37
557	409288.91	2192076.33	408878.38	2191732.94
558	409311.09	2192070.45	408867.16	2191754.00
559	409335.19	2192067.86	408855.84	2191784.70
560	409359.67	2192060.71	408854.25	2191797.40
561	409381.22	2192054.17	408853.08	2191821.00
562	409407.69	2192044.11	408850.23	2191833.59
563	409428.90	2192030.75	408850.01	2191858.04
564	409478.57	2192012.53	408854.88	2191876.88
565	409532.26	2191986.57	408862.29	2191890.85
566	409592.76	2191965.27	408871.18	2191899.74
567	409615.67	2191954.85	408882.61	2191910.85
568	409637.57	2191945.70	408899.54	2191925.98
569	409674.03	2191930.91	408914.78	2191933.50
570	409688.82	2191919.38	408926.21	2191935.72
571	409707.74	2191914.12	408956.38	2191933.07
572	409728.07	2191902.03	408965.37	2191927.89
573	409760.31	2191887.07	408978.81	2191922.70
574	409773.68	2191884.00	408994.48	2191917.20
1	382786.75	2219427.06	409031.80	2191940.76
575	414566.71	2190318.19	408177.25	2192131.50
576	414556.67	2190315.75	408158.36	2192150.39
577	414546.41	2190306.83	408137.72	2192164.36
578	414536.50	2190285.20	408121.21	2192173.41
579	414534.55	2190274.12	408113.44	2192185.79
580	414535.00	2190265.66	408087.24	2192210.08
581	414542.89	2190258.93	408066.13	2192219.60
582	414561.49	2190252.40	408051.05	2192220.72
583	414580.33	2190252.33	408035.01	2192214.84
584	414588.76	2190253.42	408026.28	2192211.35
585	414605.27	2190255.63	408013.74	2192211.67
586	414622.53	2190253.28	407991.04	2192217.22
587	414639.44	2190251.23	407968.81	2192226.75
588	414647.24	2190250.38	407949.61	2192238.81
589	414654.70	2190251.45	407929.13	2192258.82
590	414660.21	2190252.51	407916.59	2192274.53
591	414661.10	2190257.39	407903.41	2192288.18
592	414655.20	2190260.89	407897.06	2192293.74
593	414637.97	2190263.26	407891.03	2192292.63

594	414622.31	2190268.55	407887.06	2192282.63
595	414603.10	2190271.86	407885.31	2192259.13
596	414588.68	2190280.42	407894.20	2192238.34
597	414580.52	2190283.24	407887.06	2192204.68
598	414571.65	2190291.58	407889.76	2192168.01
599	414572.86	2190296.80	407901.35	2192133.09
600	414571.99	2190312.73	407921.98	2192117.21
601	-	-	407952.94	2192109.27
602	-	-	407975.96	2192106.57
603	-	-	408015.49	2192100.54
604	-	-	408057.24	2192091.02
605	-	-	408085.81	2192092.92
606	-	-	408117.25	2192103.88
607	-	-	408149.79	2192112.92
608	-	-	408168.52	2192123.88
575	414566.71	2190318.19	408177.25	2192131.50
609	425426.83	2190603.15	408435.96	2192083.13
610	425441.12	2190600.77	408422.10	2192096.68
611	425436.28	2190577.33	408398.39	2192111.18
612	425394.17	2190532.58	408387.28	2192111.07
613	425368.78	2190497.17	408385.06	2192104.30
614	425356.55	2190446.36	408395.96	2192089.69
615	425327.30	2190409.62	408419.88	2192082.50
609	425426.83	2190603.15	408435.96	2192083.13

4. Уточняемая часть внешнего контура прибрежной защитной полосы
р. Тулва

	по данным ЕГРН		уточняемые границы	
	X	Y	X	Y
1	-	-	406712,43	2192592,41
2	-	-	406800,15	2192610,80
3	-	-	406844,47	2192629,13
4	-	-	406873,11	2192646,55
5	-	-	406867,27	2192604,24
6	-	-	406870,72	2192560,83
7	-	-	406883,49	2192519,19
8	-	-	406901,18	2192486,73
9	-	-	406954,70	2192422,63
10	-	-	406995,43	2192360,54
11	-	-	407068,78	2192285,22

12	-	-	407117,36	2192246,16
13	-	-	407177,08	2192214,66
14	-	-	407271,33	2192192,13
15	-	-	407346,02	2192187,43
16	-	-	407447,72	2192205,84
17	-	-	407530,68	2192236,19
18	-	-	407593,28	2192240,02
19	-	-	407623,19	2192212,52
20	-	-	407663,92	2192189,07
21	-	-	407667,53	2192136,27
22	-	-	407675,55	2192102,34
23	-	-	407697,20	2192049,75
24	-	-	407730,67	2191997,95
25	-	-	407786,29	2191944,43
26	-	-	407888,49	2191883,20
27	-	-	407945,45	2191865,81
28	-	-	408025,72	2191860,24
29	-	-	408082,23	2191867,27
30	-	-	408217,71	2191897,67
31	-	-	408285,13	2191895,11
32	-	-	408250,74	2191831,54
33	-	-	408221,50	2191737,27
34	-	-	408214,49	2191699,13
35	-	-	408211,93	2191654,02
36	-	-	408216,44	2191611,79
37	-	-	408238,44	2191539,88
38	-	-	408281,31	2191466,44
39	-	-	408404,08	2191334,51
40	-	-	408500,64	2191261,81
41	-	-	408569,38	2191230,86
42	-	-	408613,50	2191217,45
43	-	-	408676,27	2191207,26
44	-	-	408831,52	2191206,85
45	-	-	408877,80	2191216,86
46	-	-	408927,42	2191236,13
47	-	-	408963,42	2191257,14
48	-	-	409001,01	2191287,48
49	-	-	409031,50	2191321,02
50	-	-	409057,50	2191362,26
51	-	-	409089,48	2191456,91
52	-	-	409110,97	2191573,01
53	-	-	409114,23	2191614,66
54	-	-	409105,76	2191689,69

55	-	-	409090,48	2191741,77
56	-	-	409089,20	2192138,13
57	-	-	409005,47	2192161,86
58	-	-	408935,31	2192168,64
59	-	-	408848,43	2192156,45
60	-	-	408782,87	2192127,98
61	-	-	408750,13	2192223,37
62	-	-	408697,50	2192301,24
63	-	-	408656,38	2192334,65
64	-	-	408518,98	2192413,92
65	-	-	408456,28	2192437,71
66	-	-	408375,15	2192452,50
67	-	-	408289,82	2192453,25
68	-	-	408191,67	2192465,06
69	-	-	408148,25	2192461,61
70	-	-	408105,36	2192448,26
71	-	-	408070,52	2192455,50
72	-	-	407992,48	2192541,48
73	-	-	407926,95	2192593,10
74	-	-	407871,16	2192628,50
75	-	-	407786,96	2192665,83
76	-	-	407657,13	2192694,16
77	-	-	407568,03	2192738,73
78	-	-	407524,18	2192752,78
79	-	-	407477,56	2192759,72
80	-	-	407425,62	2192754,45
81	-	-	407384,58	2192739,88
82	-	-	407343,73	2192713,53
83	-	-	407286,89	2192874,92
84	-	-	407262,96	2192920,42
85	-	-	407225,17	2192975,95
86	-	-	407187,86	2193016,35
87	-	-	407112,40	2193084,71
88	-	-	407031,29	2193142,34
89	-	-	406966,38	2193172,80
90	-	-	406901,98	2193187,59
91	-	-	406867,21	2193190,15
92	-	-	406832,52	2193186,64
93	-	-	406790,89	2193173,88
94	-	-	406728,38	2193146,64
95	-	-	406692,63	2193124,03
96	-	-	406653,36	2193083,86

97	-	-	406621,31	2193031,39
98	-	-	406605,94	2193023,16

5. Уточняемая часть внутреннего контура прибрежной защитной полосы
р. Тулова

	по данным ЕГРН		уточняемые границы	
	X	Y	X	Y
1	409031.80	2191940.76	409031.80	2191940.76
2	409007.69	2191944.97	409015.26	2191952.29
3	408981.62	2191948.86	409006.29	2191954.83
4	408955.91	2191950.79	408987.55	2191960.78
5	408928.61	2191949.43	408968.11	2191965.37
6	408903.98	2191943.85	408953.08	2191968.23
7	408885.57	2191934.80	408938.10	2191968.65
8	408862.10	2191916.24	408925.14	2191967.91
9	408843.86	2191894.14	408912.81	2191966.33
10	408831.57	2191866.93	408901.38	2191963.57
11	408824.36	2191825.13	408891.33	2191958.97
12	408827.09	2191793.57	408883.49	2191955.16
13	408833.66	2191764.98	408872.86	2191946.75
14	408839.58	2191737.39	408863.12	2191938.44
15	408846.56	2191726.72	408853.70	2191929.02
16	408856.18	2191713.83	408843.97	2191917.91
17	408874.43	2191687.69	408836.84	2191906.57
18	408883.26	2191660.45	408829.86	2191893.98
19	408883.10	2191625.91	408824.25	2191879.58
20	408879.21	2191578.94	408820.33	2191863.82
21	408868.58	2191549.15	408819.17	2191851.22
22	408859.55	2191521.32	408818.85	2191832.70
23	408851.48	2191492.87	408819.17	2191817.57
24	408835.29	2191466.25	408820.44	2191804.97
25	408821.14	2191454.96	408823.61	2191792.27
26	408799.77	2191448.14	408827.11	2191775.44
27	408771.79	2191444.50	408828.80	2191756.39
28	408749.86	2191443.55	408829.65	2191736.92
29	408733.66	2191442.66	408827.74	2191716.07
30	408707.68	2191439.67	408825.94	2191701.36
31	408680.71	2191439.29	408829.83	2191677.33
32	408656.92	2191442.24	408845.70	2191642.93
33	408638.64	2191447.51	408856.60	2191628.11
34	408624.89	2191453.83	408860.94	2191625.47
35	408608.09	2191468.90	408862.43	2191629.70
36	408592.91	2191476.84	408852.79	2191653.09

37	408575.19	2191486.36	408838.72	2191681.45
38	408559.64	2191502.43	408835.01	2191698.07
39	408544.59	2191522.34	408837.98	2191707.70
40	408527.00	2191546.84	408842.85	2191701.77
41	408513.56	2191567.84	408850.04	2191678.91
42	408494.92	2191586.89	408854.28	2191669.71
43	408482.39	2191598.77	408855.65	2191675.21
44	408472.14	2191610.35	408849.20	2191701.14
45	408463.42	2191629.44	408850.57	2191709.29
46	408455.12	2191643.67	408856.71	2191697.44
47	408447.45	2191654.96	408865.47	2191673.12
48	408441.41	2191668.23	408872.90	2191657.75
49	408442.47	2191686.18	408876.82	2191644.41
50	408448.72	2191703.54	408874.49	2191628.01
51	408455.72	2191714.38	408878.72	2191611.82
52	408464.02	2191725.58	408873.14	2191591.51
53	408467.07	2191739.64	408867.18	2191569.28
54	408473.80	2191746.91	408856.73	2191551.16
55	408485.77	2191751.30	408845.75	2191529.46
56	408495.03	2191762.84	408828.95	2191510.28
57	408512.48	2191770.91	408821.54	2191501.81
58	408545.01	2191793.52	408824.58	2191501.15
59	408559.19	2191801.85	408843.24	2191520.60
60	408564.32	2191807.80	408846.81	2191523.11
61	408576.37	2191829.47	408847.47	2191520.33
62	408594.03	2191845.68	408836.36	2191502.87
63	408611.81	2191875.91	408819.69	2191488.72
64	408621.85	2191902.12	408793.10	2191475.75
65	408624.36	2191932.45	408765.19	2191469.40
66	408620.32	2191964.32	408736.35	2191461.46
67	408610.84	2191992.22	408706.71	2191456.70
68	408596.21	2192014.16	408681.31	2191457.49
69	408585.70	2192022.50	408647.97	2191466.36
70	408577.79	2192030.20	408613.31	2191479.06
71	408573.09	2192039.57	408580.24	2191503.80
72	408567.35	2192044.07	408555.24	2191531.18
73	408558.39	2192044.92	408522.69	2191586.21
74	408548.48	2192043.15	408503.38	2191619.68
75	408539.56	2192042.69	408488.03	2191658.71
76	408523.62	2192053.05	408484.99	2191689.00
77	408507.23	2192062.92	408482.35	2191690.46
78	408493.15	2192069.90	408477.93	2191685.27
79	408477.35	2192084.02	408473.16	2191665.27

80	408463.47	2192100.12	408474.38	2191640.51
81	408445.04	2192115.17	408484.44	2191618.76
82	408426.37	2192124.35	408497.45	2191589.81
83	408404.41	2192137.40	408496.29	2191587.56
84	408376.64	2192146.79	408482.93	2191600.53
85	408352.49	2192152.31	408467.65	2191622.69
86	408335.58	2192152.07	408456.87	2191642.80
87	408322.62	2192148.64	408454.95	2191643.99
88	408303.56	2192140.89	408452.50	2191634.79
89	408279.20	2192137.30	408448.60	2191636.18
90	408258.39	2192138.29	408442.78	2191650.67
91	408249.15	2192139.29	408442.65	2191674.15
92	408247.93	2192139.42	408451.18	2191699.42
93	408231.68	2192141.18	408461.70	2191712.98
94	408208.22	2192144.77	408487.27	2191741.99
95	408192.14	2192154.97	408516.40	2191761.67
96	408178.65	2192166.18	408529.26	2191772.86
97	408159.94	2192178.95	408551.72	2191787.39
98	408145.11	2192193.09	408562.44	2191797.95
99	408131.52	2192210.18	408582.84	2191819.85
100	408118.39	2192220.09	408601.41	2191839.06
101	408099.73	2192227.96	408616.81	2191864.31
102	408083.34	2192238.17	408624.83	2191884.15
103	408067.34	2192242.19	408631.02	2191913.36
104	408051.83	2192247.83	408629.27	2191939.39
105	408040.04	2192253.86	408621.33	2191973.53
106	408029.96	2192253.71	408609.51	2191996.46
107	408018.59	2192252.90	408597.84	2192018.29
108	408011.24	2192242.38	408595.36	2192047.84
109	408006.73	2192239.70	408589.07	2192078.73
110	407997.30	2192239.24	408570.06	2192136.32
111	407987.83	2192241.74	408551.94	2192164.08
112	407977.99	2192248.44	408483.15	2192206.20
113	407962.94	2192254.42	408444.20	2192228.42
114	407944.86	2192268.49	408403.77	2192244.72
115	407929.57	2192285.23	408369.69	2192251.50
116	407915.00	2192303.29	408360.50	2192253.03
117	407909.85	2192323.42	408328.61	2192252.42
118	407904.06	2192341.91	408309.55	2192252.12
119	407897.48	2192347.02	408274.94	2192253.71
120	407880.96	2192366.34	408218.11	2192259.58
121	407861.44	2192390.19	408185.72	2192265.14
122	407839.71	2192408.79	408186.52	2192260.06

123	407808.11	2192432.29	408203.82	2192253.55
124	407790.07	2192443.46	408225.57	2192249.26
125	407763.22	2192456.44	408256.84	2192232.60
126	407734.06	2192472.00	408274.31	2192229.74
127	407707.92	2192480.43	408306.37	2192234.98
128	407683.76	2192487.27	408333.63	2192238.52
129	407661.30	2192488.93	408337.65	2192226.14
130	407639.80	2192491.23	408328.02	2192208.89
131	407614.03	2192496.41	408334.37	2192209.95
132	407595.75	2192501.68	408347.50	2192227.73
133	407580.37	2192507.99	408362.51	2192237.05
134	407569.91	2192511.10	408400.31	2192226.77
135	407563.50	2192504.17	408446.46	2192207.09
136	407566.82	2192499.67	408486.46	2192187.19
137	407569.52	2192492.86	408526.04	2192161.16
138	407556.93	2192486.17	408554.41	2192132.37
139	407533.05	2192475.93	408564.57	2192104.85
140	407513.29	2192470.43	408565.25	2192100.42
141	407498.01	2192470.22	408561.71	2192099.89
142	407463.91	2192466.48	408555.09	2192106.29
143	407433.78	2192457.27	408533.68	2192135.05
144	407414.71	2192448.87	408513.27	2192145.99
145	407393.34	2192441.40	408494.85	2192151.37
146	407366.51	2192430.26	408487.62	2192141.37
147	407332.76	2192423.60	408497.95	2192113.30
148	407304.78	2192423.87	408519.53	2192091.68
149	407286.82	2192429.49	408530.00	2192067.08
150	407263.89	2192440.56	408550.16	2192052.63
151	407251.03	2192453.42	408553.18	2192046.92
152	407239.27	2192457.50	408549.69	2192045.96
153	407221.57	2192467.04	408533.34	2192051.84
154	407200.52	2192483.36	408514.29	2192060.73
155	407181.01	2192506.23	408491.74	2192073.59
156	407172.66	2192522.74	408470.63	2192098.51
157	407161.72	2192536.28	408455.23	2192112.00
158	407155.91	2192550.21	408426.34	2192131.05
159	407147.03	2192563.78	408401.62	2192143.23
160	407142.95	2192577.07	408389.00	2192144.42
161	407141.72	2192595.65	408375.66	2192148.07
162	407148.03	2192609.43	408344.47	2192154.66
163	407149.14	2192623.13	408326.85	2192155.06
164	407148.67	2192633.87	408302.16	2192153.15
165	407144.65	2192643.26	408301.13	2192149.58

166	407142.72	2192666.37	408306.77	2192145.93
167	407140.72	2192682.97	408295.18	2192142.67
168	407130.41	2192709.56	408272.48	2192139.82
169	407122.57	2192735.20	408246.60	2192139.97
170	407115.39	2192760.86	408228.98	2192142.28
171	407099.60	2192797.16	408216.64	2192147.95
172	407087.54	2192822.73	408192.74	2192160.10
173	407072.56	2192846.32	408178.30	2192168.51
174	407050.81	2192867.85	408164.49	2192178.43
175	407031.05	2192885.49	408156.79	2192187.40
176	407002.38	2192911.50	408148.13	2192199.86
177	406974.34	2192934.93	408141.55	2192208.04
178	406948.08	2192952.81	408134.32	2192213.44
179	406930.33	2192965.61	408124.16	2192218.28
180	406917.70	2192973.59	408116.78	2192223.68
181	406907.94	2192973.76	408106.07	2192233.12
182	406899.23	2192968.77	408098.92	2192236.40
183	406888.92	2192960.79	408075.77	2192245.79
184	406884.50	2192956.39	408051.83	2192255.58
185	406879.62	2192951.54	408029.47	2192259.69
186	406867.08	2192940.93	408003.01	2192261.14
187	406861.74	2192929.80	407980.65	2192262.60
188	406852.07	2192916.30	407962.79	2192262.73
189	406837.25	2192905.00	407949.83	2192271.46
190	406816.97	2192890.04	407933.16	2192286.41
191	406791.39	2192881.22	407919.93	2192307.44
192	406774.16	2192877.40	407914.90	2192327.42
193	406767.75	2192873.73	407906.17	2192341.57
194	406752.51	2192869.59	407884.37	2192362.69
195	406729.22	2192860.48	407869.13	2192382.06
196	406709.24	2192852.90	407857.70	2192393.70
197	-	-	407832.20	2192414.02
198	-	-	407811.35	2192429.89
199	-	-	407796.11	2192440.69
200	-	-	407773.56	2192453.92
201	-	-	407762.03	2192459.42
202	-	-	407730.28	2192474.02
203	-	-	407699.48	2192483.13
204	-	-	407672.28	2192488.42
205	-	-	407641.38	2192493.07
206	-	-	407602.22	2192501.33
207	-	-	407577.35	2192510.33
208	-	-	407560.00	2192517.92

209	-	-	407538.16	2192527.64
210	-	-	407504.82	2192546.69
211	-	-	407488.59	2192555.17
212	-	-	407471.61	2192559.80
213	-	-	407476.57	2192550.66
214	-	-	407508.95	2192533.99
215	-	-	407529.23	2192523.43
216	-	-	407527.49	2192521.09
217	-	-	407523.57	2192518.52
218	-	-	407515.62	2192518.12
219	-	-	407495.72	2192527.68
220	-	-	407480.22	2192529.70
221	-	-	407466.72	2192531.61
222	-	-	407460.53	2192528.91
223	-	-	407464.18	2192523.99
224	-	-	407489.43	2192517.16
225	-	-	407516.26	2192509.54
226	-	-	407520.54	2192499.07
227	-	-	407515.74	2192488.16
228	-	-	407513.89	2192485.48
229	-	-	407495.41	2192479.94
230	-	-	407461.56	2192472.65
231	-	-	407436.37	2192462.17
232	-	-	407408.54	2192454.24
233	-	-	407375.83	2192446.30
234	-	-	407346.41	2192438.47
235	-	-	407326.44	2192432.75
236	-	-	407300.93	2192432.86
237	-	-	407274.90	2192437.52
238	-	-	407266.64	2192445.88
239	-	-	407255.74	2192453.81
240	-	-	407234.10	2192464.42
241	-	-	407203.62	2192492.05
242	-	-	407179.80	2192528.32
243	-	-	407163.06	2192554.67
244	-	-	407150.91	2192587.61
245	-	-	407155.91	2192600.39
246	-	-	407159.01	2192624.60
247	-	-	407153.93	2192650.56
248	-	-	407140.51	2192689.53
249	-	-	407124.88	2192737.47
250	-	-	407114.32	2192769.70
251	-	-	407102.89	2192796.53

252	-	-	407091.14	2192818.04
253	-	-	407077.57	2192839.31
254	-	-	407068.76	2192851.30
255	-	-	407051.93	2192869.63
256	-	-	407041.14	2192879.64
257	-	-	407019.94	2192900.35
258	-	-	407007.16	2192911.62
259	-	-	406992.16	2192924.88
260	-	-	406982.87	2192931.31
261	-	-	406964.22	2192944.09
262	-	-	406944.54	2192960.36
263	-	-	406923.26	2192974.01
264	-	-	406900.56	2192983.93
265	-	-	406879.37	2192988.14
266	-	-	406869.96	2192990.16
267	-	-	406852.73	2192969.11
268	-	-	406840.24	2192971.94
269	-	-	406831.64	2192970.55
270	-	-	406820.99	2192969.36
271	-	-	406816.56	2192967.05
272	-	-	406812.32	2192962.48
273	-	-	406805.51	2192951.50
274	-	-	406800.55	2192942.70
275	-	-	406800.62	2192939.33
276	-	-	406812.52	2192937.01
277	-	-	406826.54	2192941.12
278	-	-	406842.41	2192948.55
279	-	-	406864.47	2192956.41
280	-	-	406874.87	2192954.50
281	-	-	406875.82	2192952.60
282	-	-	406869.63	2192949.50
283	-	-	406856.69	2192946.57
284	-	-	406853.84	2192941.17
285	-	-	406850.50	2192933.14
286	-	-	406831.45	2192923.61
287	-	-	406807.64	2192910.59
288	-	-	406786.84	2192893.61
289	-	-	406758.11	2192872.81
290	-	-	406730.01	2192860.11
291	-	-	406708.32	2192851.34
292	406688.20	2192844.78	406688.20	2192844.78
293	406579.80	2192788.66	406579.80	2192788.66
294	406590.47	2192793.71	406680.93	2192789.92

295	406603.77	2192805.33	406720.11	2192796.17
296	406622.85	2192813.73	406738.76	2192801.15
297	406642.00	2192817.26	406754.40	2192807.71
298	406664.41	2192820.49	406763.76	2192814.06
299	406684.20	2192824.35	406781.22	2192834.24
300	406692.27	2192828.05	406794.19	2192845.35
301	406706.63	2192833.20	406813.50	2192858.31
302	406729.21	2192839.00	406839.89	2192871.83
303	406749.93	2192846.79	406850.34	2192877.36
304	406766.12	2192851.24	406874.68	2192884.04
305	406774.64	2192847.13	406888.44	2192889.80
306	406773.10	2192840.92	406896.71	2192890.59
307	406761.53	2192830.65	406910.14	2192887.35
308	406754.48	2192823.38	406926.01	2192882.85
309	406759.06	2192821.17	406932.23	2192877.56
310	406762.58	2192826.09	406943.08	2192872.80
311	406776.72	2192838.34	406951.88	2192871.87
312	406794.71	2192854.58	406962.46	2192868.50
313	406817.62	2192867.94	406970.27	2192861.75
314	406854.87	2192885.95	406982.24	2192855.07
315	406874.19	2192891.11	406987.79	2192846.21
316	406887.39	2192896.18	406999.63	2192840.59
317	406899.09	2192897.32	407007.77	2192833.51
318	406922.63	2192896.34	407018.75	2192829.08
319	406951.22	2192898.70	407021.79	2192822.79
320	406964.20	2192901.15	407027.88	2192818.96
321	406967.69	2192906.73	407034.10	2192816.91
322	406972.54	2192909.42	407049.77	2192812.54
323	406980.40	2192904.97	407056.72	2192800.83
324	406995.96	2192885.95	407068.16	2192785.75
325	407014.78	2192865.67	407074.64	2192769.54
326	407026.56	2192860.30	407078.08	2192747.78
327	407038.17	2192844.49	407081.32	2192747.98
328	407045.82	2192831.87	407086.75	2192751.22
329	407052.03	2192830.00	407088.60	2192748.97
330	407067.75	2192798.94	407084.63	2192734.62
331	407080.04	2192781.18	407088.07	2192727.34
332	407097.99	2192752.42	407092.11	2192718.41
333	407110.24	2192715.75	407094.29	2192709.88
334	407116.15	2192688.45	407095.48	2192696.45
335	407113.16	2192669.18	407094.09	2192695.40
336	407104.54	2192657.34	407084.96	2192711.80
337	407103.79	2192644.92	407081.52	2192710.67

338	407109.40	2192635.55	407082.58	2192701.55
339	407122.52	2192627.27	407085.76	2192679.65
340	407130.80	2192619.23	407093.10	2192672.44
341	407134.19	2192609.17	407092.97	2192668.87
342	407130.77	2192598.71	407087.94	2192648.83
343	407123.51	2192585.25	407089.42	2192629.65
344	407118.40	2192573.76	407084.23	2192612.25
345	407116.95	2192561.03	407076.29	2192604.95
346	407123.40	2192542.22	407069.42	2192603.26
347	407138.40	2192516.36	407067.19	2192598.28
348	407148.10	2192496.91	407072.70	2192590.98
349	407166.54	2192479.91	407096.40	2192563.78
350	407181.07	2192465.77	407108.06	2192553.54
351	407207.45	2192439.08	407120.63	2192536.08
352	407236.71	2192415.73	407130.68	2192517.69
353	407251.47	2192406.82	407146.84	2192491.21
354	407264.83	2192405.38	407170.90	2192466.43
355	407271.70	2192402.53	407192.88	2192443.96
356	407288.64	2192400.81	407210.19	2192426.66
357	407316.67	2192396.96	407227.97	2192412.80
358	407326.79	2192393.51	407250.30	2192400.78
359	407339.46	2192394.34	407271.25	2192395.39
360	407361.85	2192398.57	407303.32	2192389.57
361	407386.51	2192402.82	407335.97	2192387.18
362	407408.05	2192410.17	407369.68	2192392.60
363	407434.57	2192420.65	407399.89	2192400.04
364	407459.15	2192431.42	407426.56	2192409.67
365	407480.39	2192440.16	407462.60	2192424.44
366	407498.88	2192444.00	407477.52	2192434.07
367	407513.17	2192444.86	407484.50	2192435.79
368	407519.02	2192445.27	407502.12	2192438.33
369	407525.77	2192450.89	407515.69	2192436.51
370	407533.17	2192457.18	407525.30	2192436.11
371	407547.14	2192459.02	407536.57	2192436.51
372	407561.10	2192460.17	407554.43	2192436.19
373	407569.49	2192464.87	407568.56	2192443.25
374	407589.33	2192470.34	407575.38	2192450.24
375	407599.13	2192467.23	407579.51	2192456.59
376	407622.94	2192463.00	407590.46	2192460.00
377	407638.33	2192462.89	407605.07	2192458.02
378	407654.88	2192465.72	407625.23	2192455.56
379	407659.48	2192464.38	407646.90	2192451.51
380	407673.82	2192460.78	407673.89	2192445.64

381	407684.29	2192455.70	407684.34	2192439.62
382	407697.34	2192452.95	407712.74	2192426.53
383	407720.27	2192440.56	407746.79	2192410.09
384	407749.69	2192431.20	407769.95	2192394.69
385	407785.27	2192413.12	407788.47	2192381.98
386	407809.57	2192395.85	407800.34	2192372.39
387	407833.93	2192375.35	407809.18	2192363.68
388	407838.24	2192371.15	407807.02	2192356.61
389	407839.66	2192369.77	407800.12	2192357.88
390	407850.08	2192359.61	407781.15	2192372.16
391	407860.99	2192346.08	407760.99	2192383.28
392	407866.32	2192337.03	407750.03	2192378.51
393	407863.84	2192328.18	407738.68	2192377.88
394	407860.06	2192320.32	407742.73	2192372.88
395	407860.25	2192306.31	407769.56	2192361.37
396	407862.88	2192280.92	407805.91	2192342.88
397	407864.05	2192243.79	407814.38	2192336.69
398	407866.85	2192206.02	407826.76	2192334.89
399	407871.85	2192173.83	407836.39	2192326.90
400	407872.22	2192172.08	407847.08	2192314.89
401	407872.64	2192170.14	407851.52	2192303.88
402	407877.43	2192147.85	407855.71	2192296.42
403	407889.73	2192129.11	407858.67	2192290.71
404	407906.38	2192112.40	407861.00	2192274.36
405	407915.56	2192106.67	407859.30	2192261.82
406	407924.88	2192103.87	407860.05	2192243.85
407	407930.75	2192102.79	407861.26	2192230.91
408	407934.76	2192101.29	407862.58	2192214.14
409	407937.45	2192100.29	407863.54	2192202.55
410	407941.71	2192096.43	407865.60	2192181.01
411	407945.41	2192089.00	407865.44	2192165.14
412	407952.27	2192086.17	407870.42	2192153.92
413	407960.46	2192082.03	407875.28	2192140.80
414	407966.40	2192076.74	407882.07	2192128.63
415	407973.15	2192070.01	407892.59	2192116.67
416	407975.16	2192069.82	407903.49	2192106.51
417	407983.85	2192072.92	407912.11	2192101.00
418	407993.96	2192070.77	407919.79	2192096.40
419	408011.57	2192066.79	407924.87	2192095.02
420	408020.71	2192068.53	407931.75	2192095.29
421	408037.29	2192068.77	407939.63	2192089.31
422	408043.83	2192068.86	407947.52	2192084.44
423	408059.34	2192074.94	407965.06	2192075.42

424	408072.35	2192075.44	407970.48	2192065.63
425	408081.52	2192080.47	407977.43	2192063.25
426	408093.77	2192087.82	407986.08	2192066.32
427	408109.66	2192091.30	407993.42	2192063.80
428	408130.75	2192094.19	408005.99	2192060.83
429	408152.77	2192100.69	408022.92	2192060.23
430	408171.26	2192105.20	408044.75	2192063.74
431	408184.86	2192107.00	408063.07	2192068.24
432	408203.70	2192108.58	408080.15	2192071.95
433	408221.61	2192106.86	408116.12	2192081.40
434	408234.59	2192109.01	408135.04	2192085.43
435	408248.03	2192115.39	408168.51	2192091.52
436	408257.73	2192119.77	408183.31	2192096.43
437	408268.16	2192117.28	408207.72	2192098.54
438	408277.74	2192110.90	408222.43	2192097.66
439	408288.69	2192114.31	408248.53	2192096.56
440	408302.69	2192113.55	408269.77	2192094.48
441	408311.42	2192117.58	408277.49	2192097.39
442	408322.71	2192122.62	408291.73	2192106.18
443	408330.53	2192122.73	408321.52	2192110.36
444	408343.89	2192120.31	408339.72	2192110.52
445	408357.23	2192120.17	408354.27	2192105.60
446	408362.50	2192115.04	408365.39	2192098.35
447	408366.90	2192103.36	408373.09	2192088.29
448	408379.11	2192089.52	408382.43	2192080.35
449	408398.13	2192079.34	408395.10	2192074.93
450	408414.44	2192074.70	408413.54	2192068.66
451	408430.76	2192070.36	408433.39	2192061.09
452	408442.14	2192070.85	408445.87	2192053.58
453	408451.61	2192072.94	408463.18	2192045.54
454	408457.50	2192070.10	408480.71	2192038.06
455	408462.14	2192063.32	408495.65	2192032.97
456	408468.34	2192062.42	408519.47	2192019.54
457	408477.18	2192057.65	408529.79	2192012.79
458	408481.21	2192048.91	408536.00	2192003.73
459	408486.82	2192043.14	408536.60	2191991.16
460	408510.69	2192033.04	408532.90	2191981.15
461	408532.02	2192020.30	408528.29	2191970.82
462	408539.57	2192015.21	408528.32	2191965.49
463	408547.02	2192016.93	408534.23	2191948.74
464	408556.52	2192014.46	408532.40	2191943.18
465	408571.17	2192000.65	408523.84	2191938.37
466	408583.48	2191981.27	408522.08	2191919.10

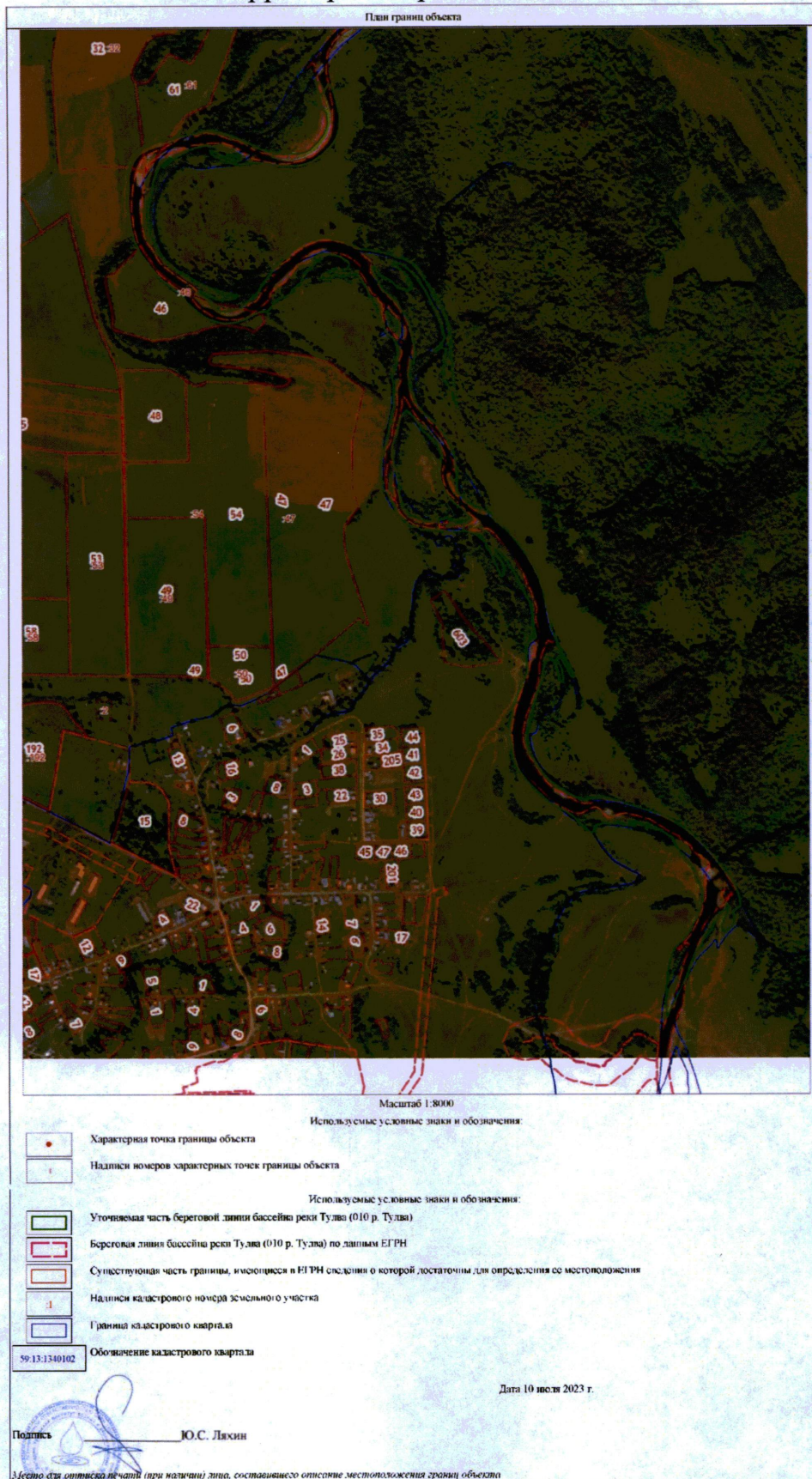
467	408591.00	2191955.65	408527.63	2191913.01
468	408596.88	2191929.66	408532.13	2191916.06
469	408597.55	2191905.62	408538.62	2191933.58
470	408590.37	2191884.00	408548.61	2191947.24
471	408576.98	2191864.92	408544.82	2191961.58
472	408550.61	2191843.37	408549.04	2191983.00
473	408534.55	2191829.78	408559.22	2191986.44
474	408514.27	2191814.51	408569.81	2191981.54
475	408509.55	2191804.02	408581.84	2191962.49
476	408502.87	2191792.84	408590.31	2191928.89
477	408497.08	2191788.21	408587.40	2191907.19
478	408487.48	2191777.64	408578.14	2191892.25
479	408474.49	2191776.15	408574.83	2191893.44
480	408468.28	2191771.18	408579.60	2191915.93
481	408452.40	2191751.75	408574.70	2191912.09
482	408429.10	2191720.78	408564.93	2191893.14
483	408421.38	2191691.68	408544.85	2191874.23
484	408421.49	2191659.42	408517.42	2191858.91
485	408429.77	2191626.63	408506.83	2191848.19
486	408445.41	2191601.42	408494.80	2191835.09
487	408462.60	2191581.79	408485.14	2191829.54
488	408482.96	2191567.76	408480.38	2191819.62
489	408492.26	2191553.87	408470.85	2191798.71
490	408508.91	2191525.11	408464.46	2191788.37
491	408521.48	2191510.94	408443.20	2191772.65
492	408543.30	2191485.84	408439.63	2191765.77
493	408560.38	2191473.06	408439.63	2191751.49
494	408583.97	2191460.99	408439.07	2191742.95
495	408601.41	2191446.26	408431.53	2191731.68
496	408631.60	2191427.80	408421.21	2191706.52
497	408666.89	2191418.52	408414.54	2191684.93
498	408710.95	2191414.72	408412.40	2191670.25
499	408740.87	2191415.15	408411.92	2191656.83
500	408773.34	2191418.87	408414.23	2191641.51
501	408805.59	2191425.25	408418.91	2191628.57
502	408820.47	2191431.02	408423.06	2191616.81
503	408838.88	2191439.08	408429.41	2191604.91
504	408851.54	2191450.67	408436.56	2191592.54
505	408861.35	2191470.68	408449.72	2191576.33
506	408867.93	2191488.69	408460.30	2191565.55
507	408869.69	2191501.11	408468.50	2191557.74
508	408876.81	2191509.67	408477.50	2191550.07
509	408882.82	2191522.13	408488.28	2191540.75

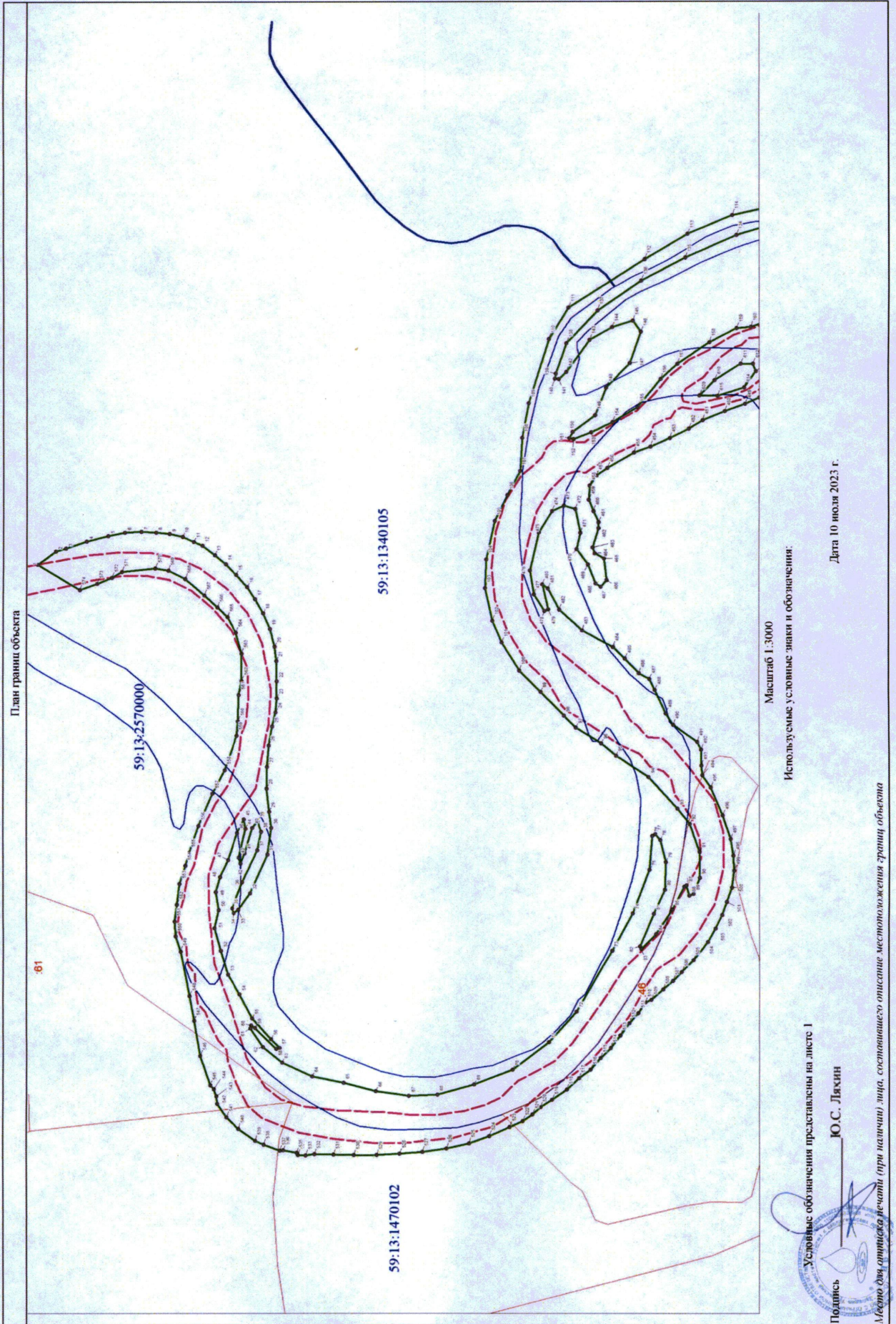
510	408888.14	2191535.89	408493.51	2191538.50
511	408894.86	2191543.81	408499.99	2191528.77
512	408896.36	2191552.95	408508.26	2191519.91
513	408897.09	2191570.56	408516.46	2191508.80
514	408902.50	2191578.77	408525.26	2191497.68
515	408904.22	2191595.74	408534.45	2191488.69
516	408909.91	2191606.90	408543.50	2191477.92
517	408911.42	2191615.71	408554.06	2191470.46
518	408909.63	2191626.78	408565.25	2191460.30
519	408905.22	2191640.40	408578.51	2191451.41
520	408903.07	2191654.36	408588.96	2191444.62
521	408896.01	2191669.59	408596.03	2191438.40
522	408888.41	2191700.09	408604.96	2191432.45
523	408876.04	2191723.71	408616.67	2191427.23
524	408864.43	2191740.48	408635.13	2191419.75
525	408854.98	2191764.47	408653.58	2191413.40
526	408851.53	2191785.26	408673.95	2191409.23
527	408847.38	2191795.63	408695.72	2191406.32
528	408844.43	2191821.65	408716.02	2191405.07
529	408844.75	2191844.78	408736.73	2191404.14
530	408858.91	2191878.55	408756.97	2191404.47
531	408874.89	2191898.32	408775.16	2191405.13
532	408894.80	2191915.54	408792.22	2191405.79
533	408913.98	2191925.31	408800.09	2191404.93
534	408934.73	2191929.52	408806.84	2191405.33
535	408957.82	2191929.52	408808.16	2191407.18
536	408982.90	2191925.97	408820.00	2191409.63
537	409015.84	2191918.95	408823.31	2191409.30
538	409037.68	2191914.68	408837.67	2191415.05
539	409071.90	2191907.31	408845.14	2191418.43
540	409084.00	2191904.23	408860.02	2191429.34
541	409087.63	2191897.76	408870.67	2191439.93
542	409084.81	2191892.52	408878.81	2191452.10
543	409074.16	2191885.52	408879.73	2191458.91
544	409071.04	2191876.35	408881.65	2191465.72
545	409079.73	2191883.31	408884.89	2191468.83
546	409096.72	2191899.83	408893.29	2191495.82
547	409111.46	2191915.70	408898.32	2191527.83
548	409131.39	2191930.96	408901.83	2191550.32
549	409162.92	2191956.31	408909.24	2191591.33
550	409185.21	2191982.36	408913.53	2191604.96
551	409201.17	2192003.76	408914.26	2191618.59
552	409217.43	2192026.47	408911.88	2191633.53

553	409225.14	2192032.44	408909.30	2191652.19
554	409237.55	2192052.15	408903.94	2191668.46
555	409255.84	2192069.35	408900.28	2191679.97
556	409274.26	2192076.79	408891.40	2191704.37
557	409288.91	2192076.33	408878.38	2191732.94
558	409311.09	2192070.45	408867.16	2191754.00
559	409335.19	2192067.86	408855.84	2191784.70
560	409359.67	2192060.71	408854.25	2191797.40
561	409381.22	2192054.17	408853.08	2191821.00
562	409407.69	2192044.11	408850.23	2191833.59
563	409428.90	2192030.75	408850.01	2191858.04
564	409478.57	2192012.53	408854.88	2191876.88
565	409532.26	2191986.57	408862.29	2191890.85
566	409592.76	2191965.27	408871.18	2191899.74
567	409615.67	2191954.85	408882.61	2191910.85
568	409637.57	2191945.70	408899.54	2191925.98
569	409674.03	2191930.91	408914.78	2191933.50
570	409688.82	2191919.38	408926.21	2191935.72
571	409707.74	2191914.12	408956.38	2191933.07
572	409728.07	2191902.03	408965.37	2191927.89
573	409760.31	2191887.07	408978.81	2191922.70
574	409773.68	2191884.00	408994.48	2191917.20
1	382786.75	2219427.06	409031.80	2191940.76
575	414566.71	2190318.19	408177.25	2192131.50
576	414556.67	2190315.75	408158.36	2192150.39
577	414546.41	2190306.83	408137.72	2192164.36
578	414536.50	2190285.20	408121.21	2192173.41
579	414534.55	2190274.12	408113.44	2192185.79
580	414535.00	2190265.66	408087.24	2192210.08
581	414542.89	2190258.93	408066.13	2192219.60
582	414561.49	2190252.40	408051.05	2192220.72
583	414580.33	2190252.33	408035.01	2192214.84
584	414588.76	2190253.42	408026.28	2192211.35
585	414605.27	2190255.63	408013.74	2192211.67
586	414622.53	2190253.28	407991.04	2192217.22
587	414639.44	2190251.23	407968.81	2192226.75
588	414647.24	2190250.38	407949.61	2192238.81
589	414654.70	2190251.45	407929.13	2192258.82
590	414660.21	2190252.51	407916.59	2192274.53
591	414661.10	2190257.39	407903.41	2192288.18
592	414655.20	2190260.89	407897.06	2192293.74
593	414637.97	2190263.26	407891.03	2192292.63

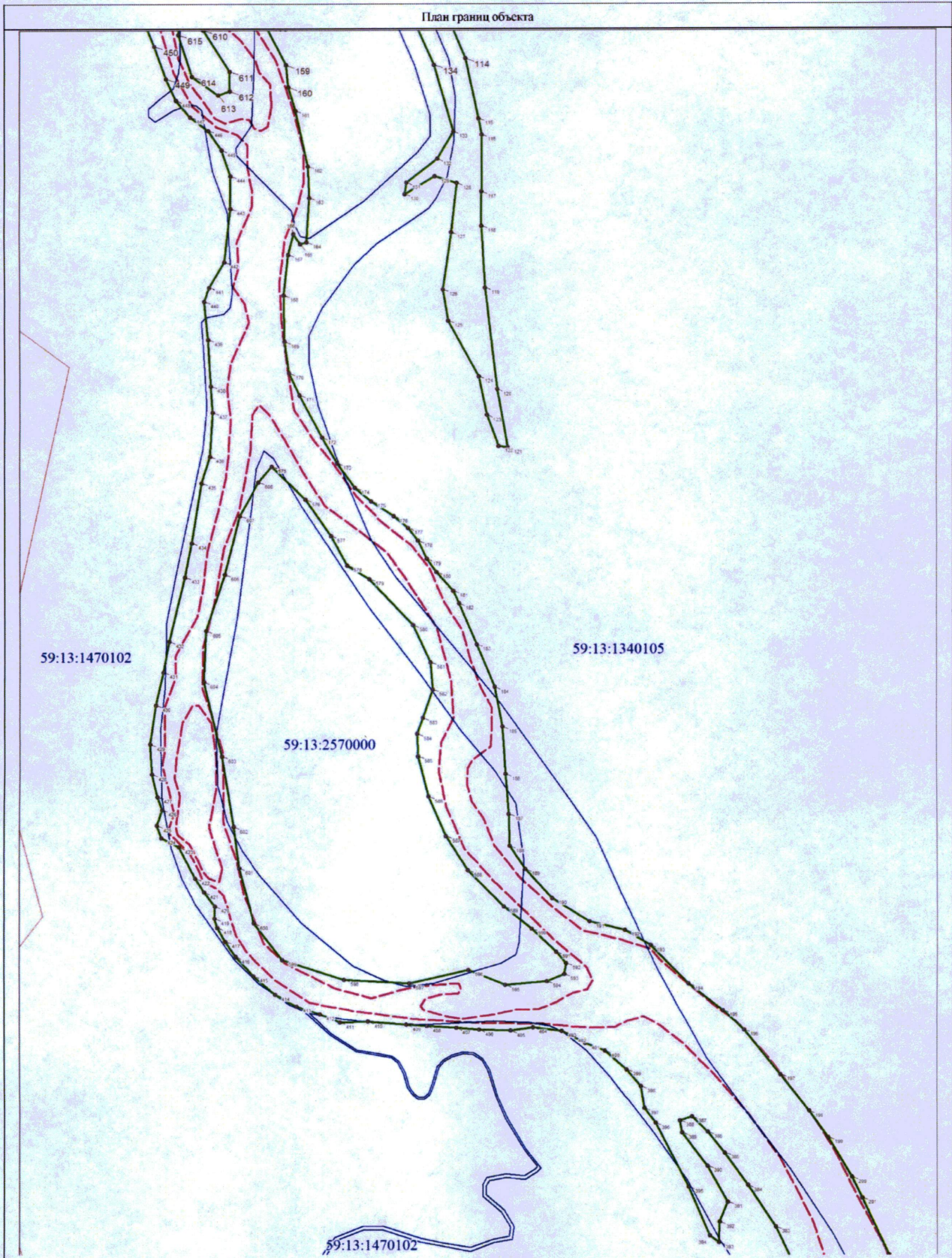
594	414622.31	2190268.55	407887.06	2192282.63
595	414603.10	2190271.86	407885.31	2192259.13
596	414588.68	2190280.42	407894.20	2192238.34
597	414580.52	2190283.24	407887.06	2192204.68
598	414571.65	2190291.58	407889.76	2192168.01
599	414572.86	2190296.80	407901.35	2192133.09
600	414571.99	2190312.73	407921.98	2192117.21
601	-	-	407952.94	2192109.27
602	-	-	407975.96	2192106.57
603	-	-	408015.49	2192100.54
604	-	-	408057.24	2192091.02
605	-	-	408085.81	2192092.92
606	-	-	408117.25	2192103.88
607	-	-	408149.79	2192112.92
608	-	-	408168.52	2192123.88
575	414566.71	2190318.19	408177.25	2192131.50
609	425426.83	2190603.15	408435.96	2192083.13
610	425441.12	2190600.77	408422.10	2192096.68
611	425436.28	2190577.33	408398.39	2192111.18
612	425394.17	2190532.58	408387.28	2192111.07
613	425368.78	2190497.17	408385.06	2192104.30
614	425356.55	2190446.36	408395.96	2192089.69
615	425327.30	2190409.62	408419.88	2192082.50
609	425426.83	2190603.15	408435.96	2192083.13

Схема изменений береговой линии (границы водного объекта), водоохранной зоны и прибрежной защитной полосы части р. Тулва на территории Бардымского м.о.





План границ объекта



59:13:1470102

59:13:1340105

59:13:2570000

59:13:1470102

Масштаб 1:2000

Используемые условные знаки и обозначения:

Условные обозначения представлены на листе 1

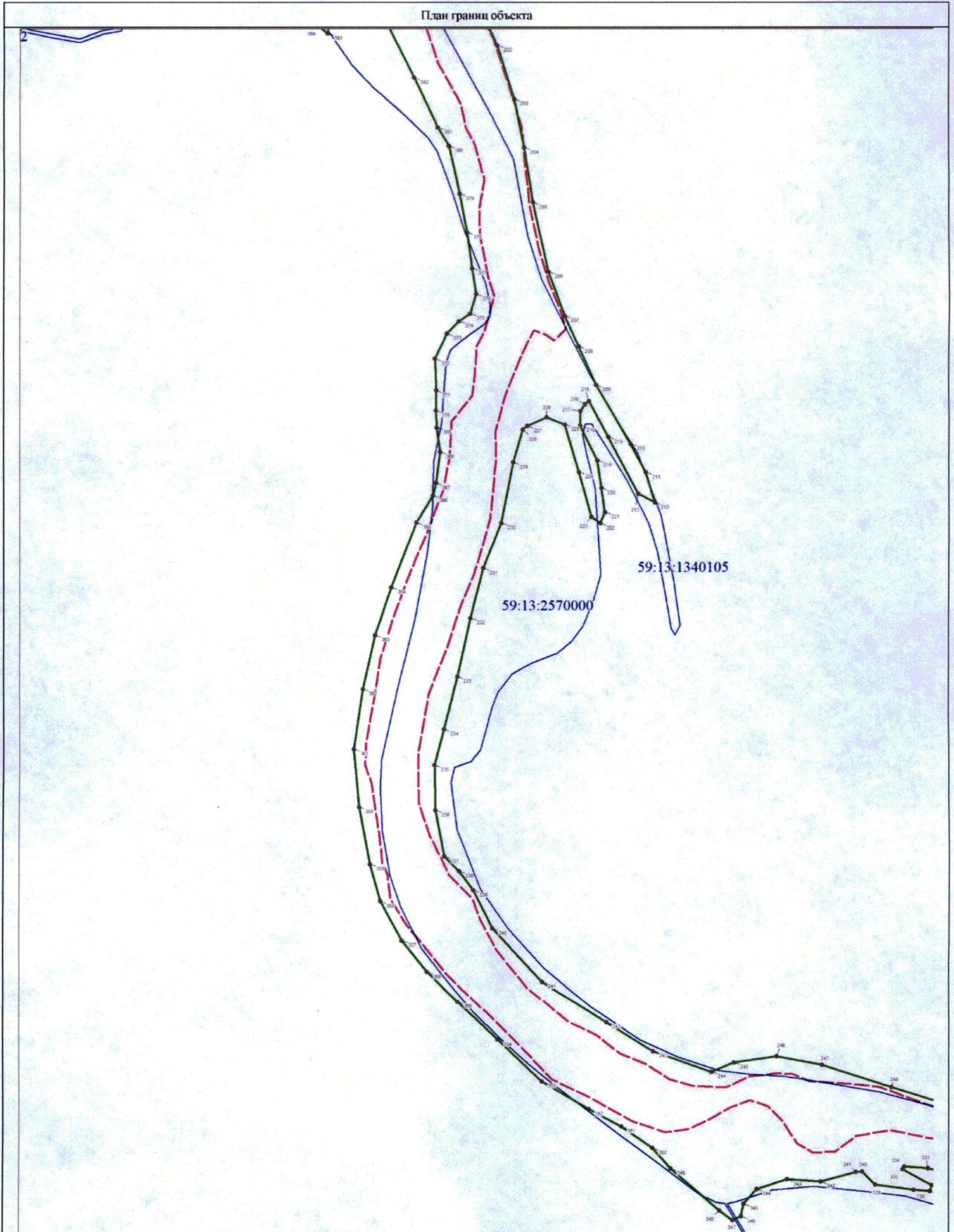
Подпись

Ю.С. Ляхин

Дата 10 июля 2023 г.

Место для оттиска печати (при наличии) лица, составившего описание местоположения границ объекта

План границ объекта



Масштаб 1:2000

Используемые условные знаки и обозначения:

Условные обозначения представлены на листе 1

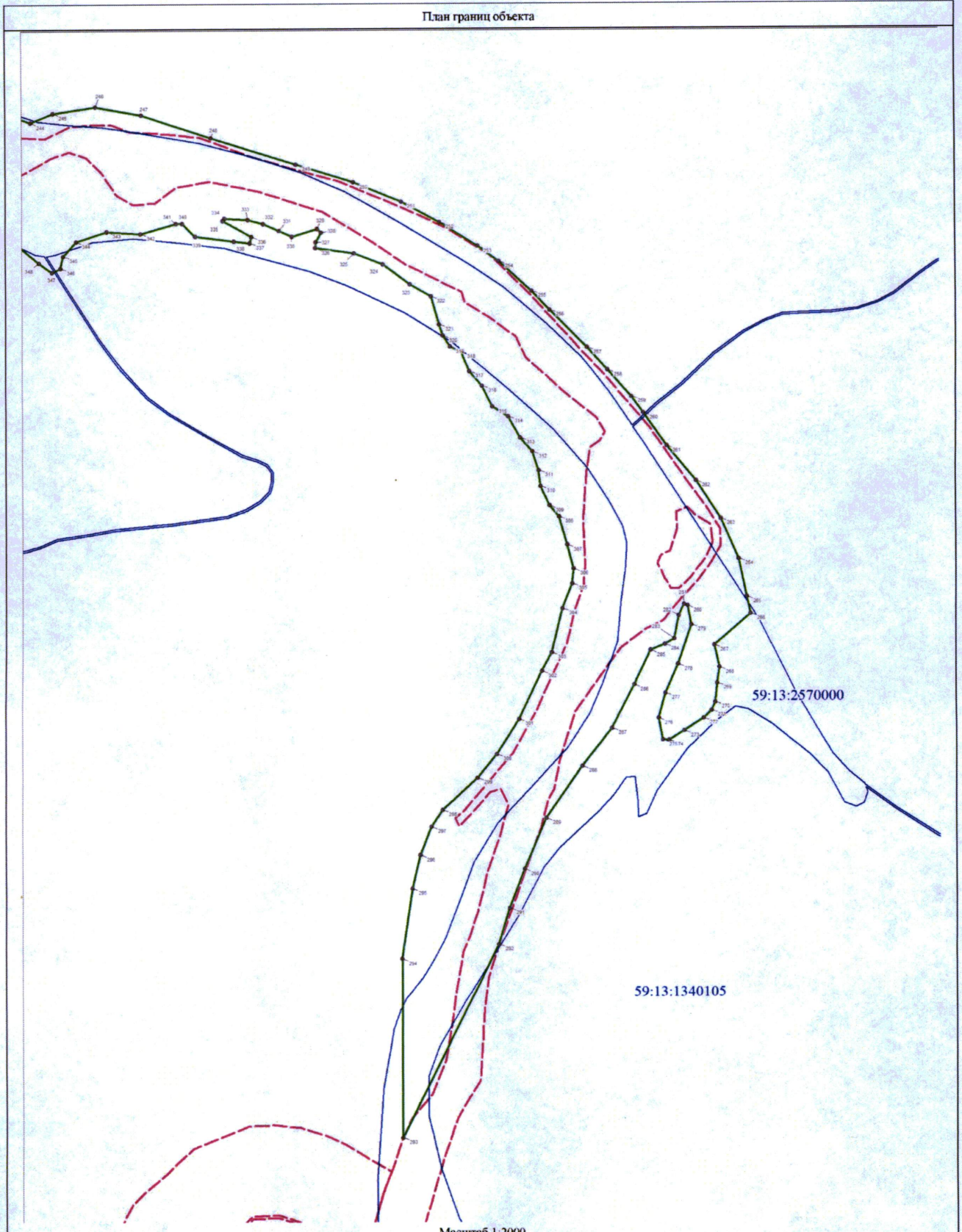
Подпись

Ю.С. Ляхин

Дата 10 июля 2023 г.

Место для оттиска печати (при наличии) лица, составившего описание местоположения границ объекта

План границ объекта



59:13:2570000

59:13:1340105

Масштаб 1:2000

Используемые условные знаки и обозначения:

Условные обозначения представлены на листе 1



Подпись

Ю.С. Лякин

Дата 10 июля 2023 г.

Место для оттиска печати (при наличии) лица, составившего описание местоположения границ объекта